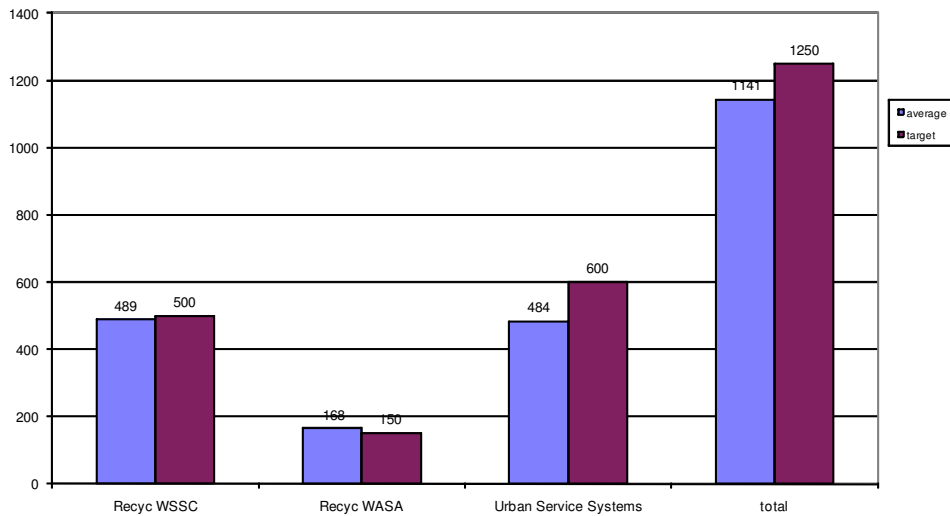


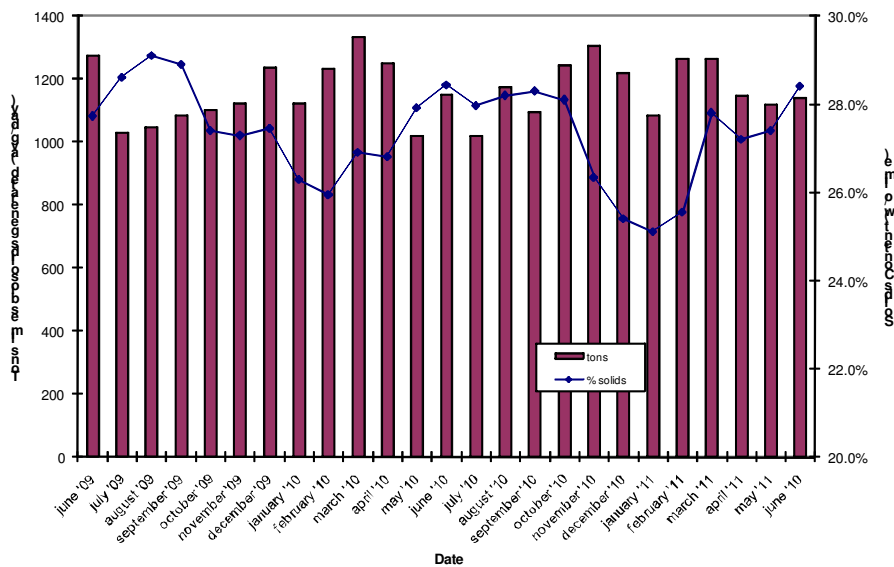
June 2011 Biosolids Division Report

In June, biosolids hauling averaged 1141 wet tons per day. The average solids content was 28.4%. The average lime dose was 21.1%. The graph below shows the hauling by contractor for the month of June. In June, DC Water again shipped biosolids to the McGill Compost Facility in Waverly, VA. This is done through the Urban Service Systems contract. In June a total of 1517 tons went to compost production. At the end of June, after being completely empty during the month the Cumberland County storage pad had 214 tons (~25,000 tons capacity) and the Cedarville lagoon had zero tons (~30,000 tons capacity).

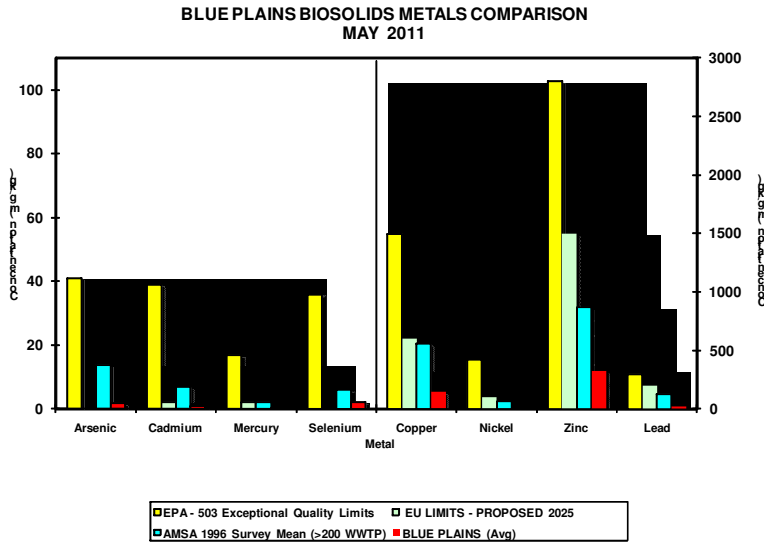
Average Daily Hauling by Contractor for June 2011



Average Daily Biosolids Production and Solids Content



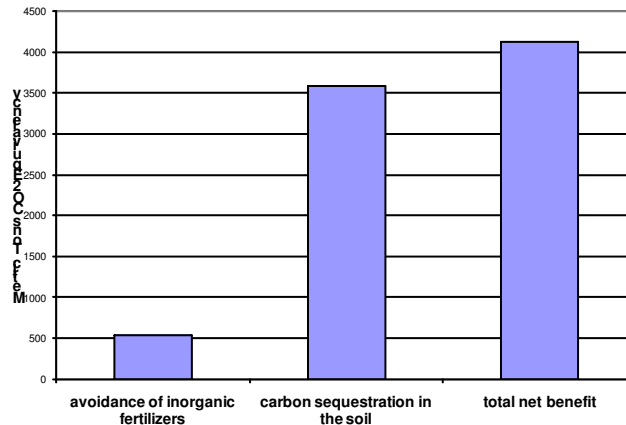
The graphs below show the EPA regulated heavy metals in the Blue Plains biosolids for the month of May 2011. As can be seen in the graphs, the Blue Plains levels are considerably below the regulated exceptional quality limits, the national average levels surveyed in 1996, and the European Union (EU) limits. The EU limits are more conservative than the USEPA limits, and Blue Plains biosolids metals content is lower than the EU standards as well.



Environmental Benefits

The quantity land applied coming directly from the plant and from storage facilities equaled 39,257 tons. In addition, 670 tons went to composting. Taking into account the fuel required to transport biosolids to the field, the net benefit of the land applied material is 4125 metric tons CO₂ equivalent avoided emissions. This is equivalent to taking 5,078,862 car miles off the road in the month of May (assumes 20 mpg, 19.4 lb CO₂ equivalent emissions/gallon gas – EPA estimate). The cumulative total avoided carbon emission since June, 2007 is 78,559 metric tons CO₂ equivalent.

**DCWASA Biosolids Recycling Program
Greenhouse Gas Balance Benefits
May 2011 Totals**



June Highlights

Staff met with a farmer in Fauquier County, VA who has a farm in The Plains and is applying for a permit to land apply biosolids. The meeting was an initial communication to relay the importance of success in this sensitive community with the farmer and the land application contractor. Staff informed VA DEQ of the intent, and is facilitating communication to help ensure that there are no misunderstandings from the neighbors or other members of the community. Success would open other farms to the possibility of biosolids use in this relatively close county.

Staff worked with DC DOT to identify additional sites for compost use in DC. Thus far, DC DOT has used the product in two restoration projects in the District, with more sites under consideration for this summer.

Staff volunteered for a WEF task force to examine the possibility of an industry wide name change for wastewater treatment plant, with an emphasis toward the recovery of three resources – nutrients, energy, and water.

Map of Blue Plains Biosolids Applications and Agricultural \$'s for May 2011

