

January, 2008

Biosolids Division Monthly Report

Submitted by:

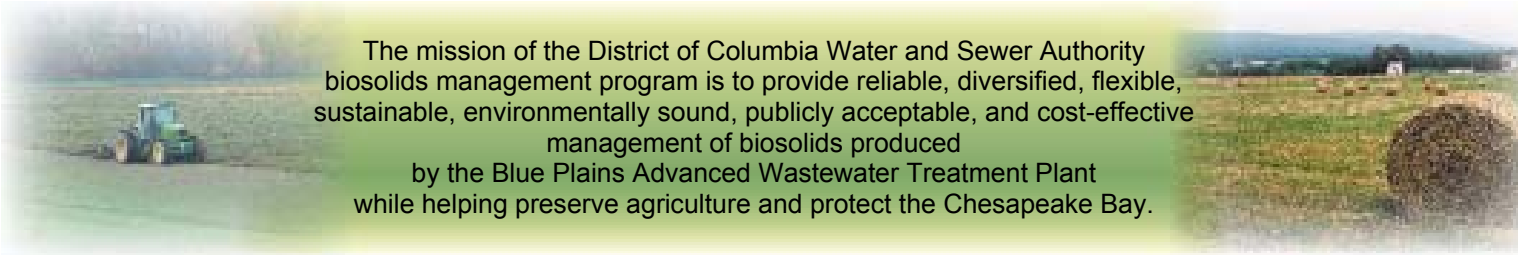
Chris Peot

Biosolids Division Manager



District of Columbia Water and Sewer Authority

Biosolids Division
5000 Overlook Avenue SW
Washington, DC 20032
202-787-4329; 202-787-4226 (fax)
chris_peot@dcwasa.com

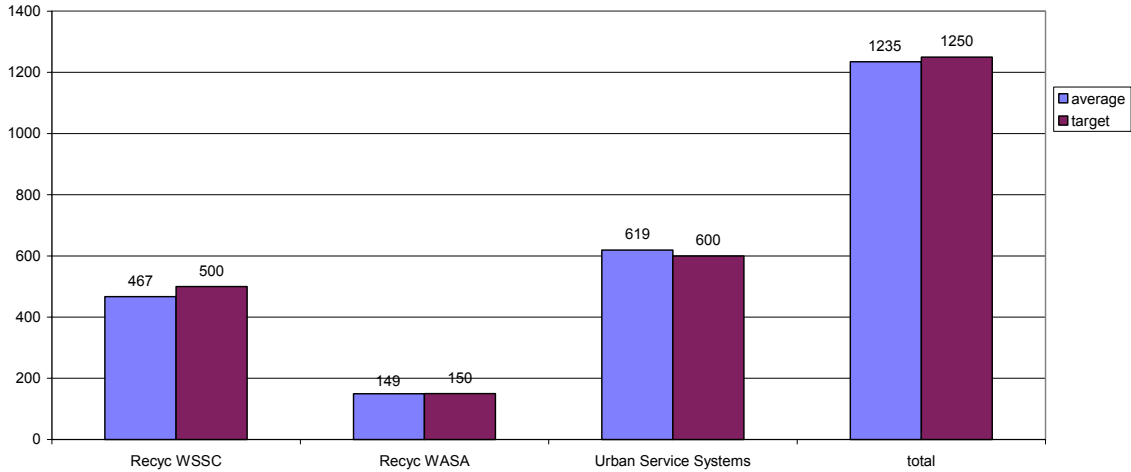


The mission of the District of Columbia Water and Sewer Authority biosolids management program is to provide reliable, diversified, flexible, sustainable, environmentally sound, publicly acceptable, and cost-effective management of biosolids produced by the Blue Plains Advanced Wastewater Treatment Plant while helping preserve agriculture and protect the Chesapeake Bay.

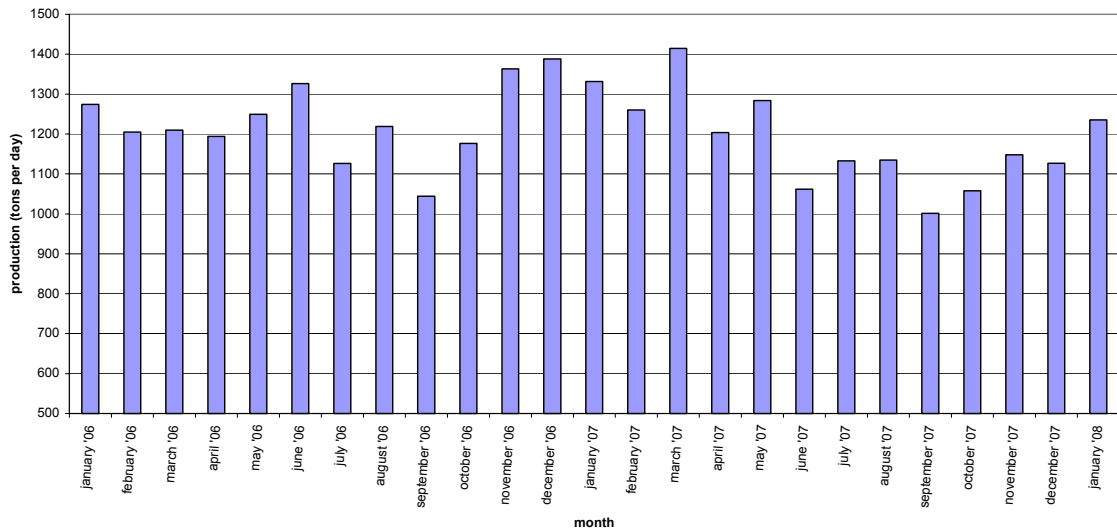
January 2008 Blue Plains Biosolids Report

In January, biosolids hauling averaged 1235 wet tons per day. The graph below shows the hauling by contractor for the month of January. Average % solids was 25.4%, and average lime dose was 11%. A second graph shows average tons recycled per day for the last 24 months.

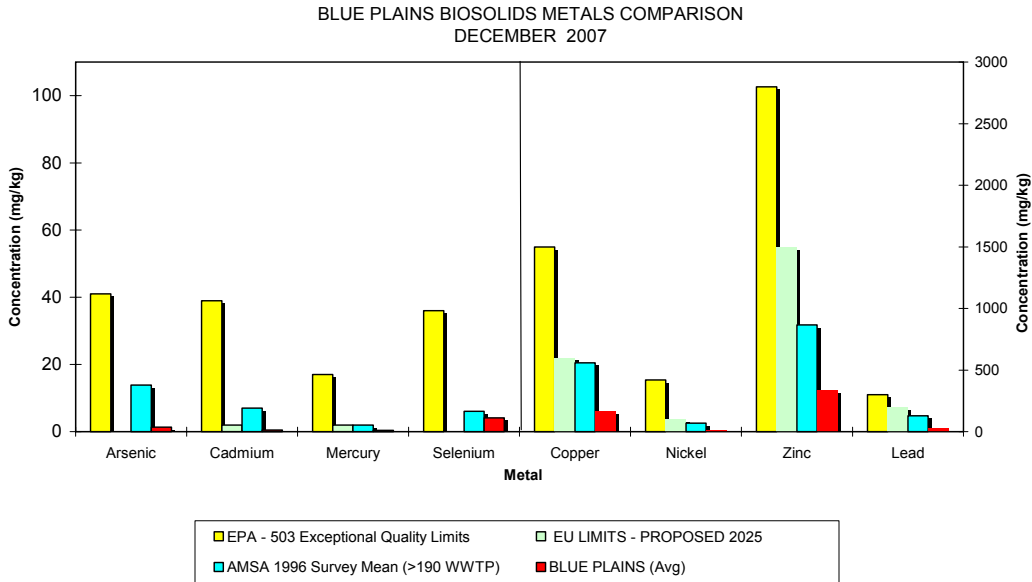
Average Daily Hauling by Contractor for January, 2008



Average Daily Biosolids Production



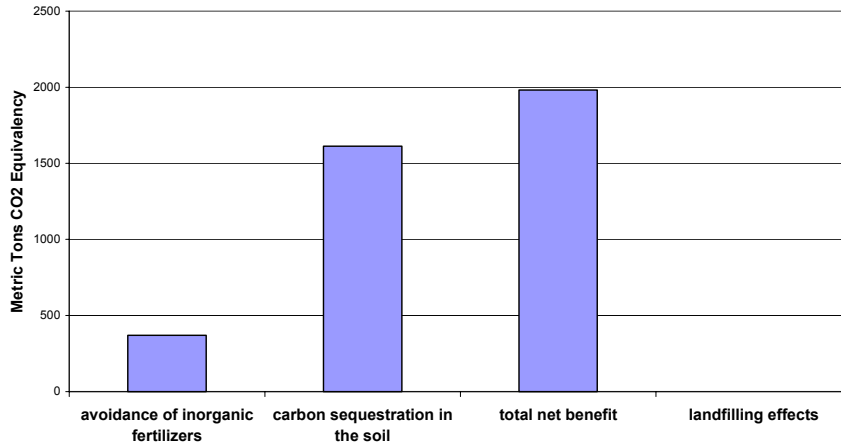
The graphs below show the EPA regulated heavy metals in the Blue Plains biosolids for the month of December 2007. As can be seen in the graphs, the Blue Plains levels are considerably below the regulated exceptional quality limits, the AMSA average levels surveyed in 1996, and even the proposed 2025 European Union (EU) limits.



Environmental Benefits

In December of 2007 staff sent 30,366 wet tons of biosolids for reuse. 712 tons of material came out of storage in December. No tonnage went to landfills in December. The graph below shows the benefits as compared to landfilling all the biosolids in a non-energy recovering landfill. Taking into account the fuel required to transport biosolids to the field, the net benefit is 1983 metric tons CO₂ equivalent avoided emissions. The graph shows the benefit (carbon credit) of the sequestration, the energy savings due to avoiding conventional fertilizer use, and the total of the two. This is equivalent to taking 4,496,484 car miles off the road in the month of November (assumes 20 mpg, 19.4 lb CO₂ emissions/gallon gas – EPA estimate).

**DCWASA Biosolids Recycling Program
Greenhouse Gas Balance Benefits
December 2007 Hauling Totals**



HIGHLIGHTS

Staff participated in an all day meeting with Maryland Department of the Environment (MDE) officials to discuss and comment on the proposed new biosolids regulations for the State of Maryland. Staff is part of a task force to review the regulations and provide comments and language for consideration by MDE staff.

Staff participated in the briefing of WSSC officials on the progress toward a new biosolids management plan, to include digestion technologies and diverse product lines. Staff agreed to coordinate the effort with interested WSSC officials.

Staff worked with concerned citizens in Virginia to address the concerns of a family that live next to a biosolids land application field planned for late January. Inspectors, contractors, and State officials worked with the family, who has a son with respiratory issues, to delay the application close to his site and ultimately increase the buffer to approximately 2000 feet.

Map of Blue Plains Biosolids Applications and Agricultural \$'s for December 2007



December 2007 Biosolids Land Applied from Plant & Storages

County, Tons to Storage (if applicable)
Tons Applied, Agriculture\$

