

September, 2006

Biosolids Division Monthly Report

Submitted to:

Glenn S. Gerstell
Chairman of the Board


Submitted by:

Chris Peot
Biosolids Division Manager



District of Columbia Water and Sewer Authority

Biosolids Division
5000 Overlook Avenue SW
Washington, DC 20032
202-787-4329; 202-787-4226 (fax)
chris_peot@dcwasa.com

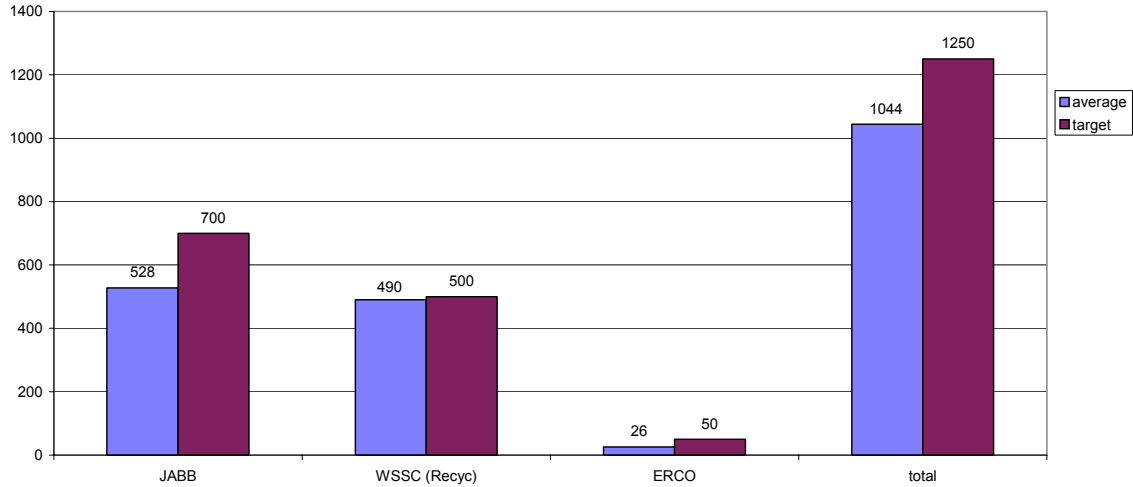
A photograph of a rural agricultural landscape. In the foreground, a green tractor is working in a field. To the right, there is a large, round hay bale. The background shows a line of trees and a clear sky.

The mission of the District of Columbia Water and Sewer Authority biosolids management program is to provide reliable, diversified, flexible, sustainable, environmentally sound, publicly acceptable, and cost-effective management of biosolids produced by the Blue Plains Advanced Wastewater Treatment Plant while helping preserve agriculture and protect the Chesapeake Bay.

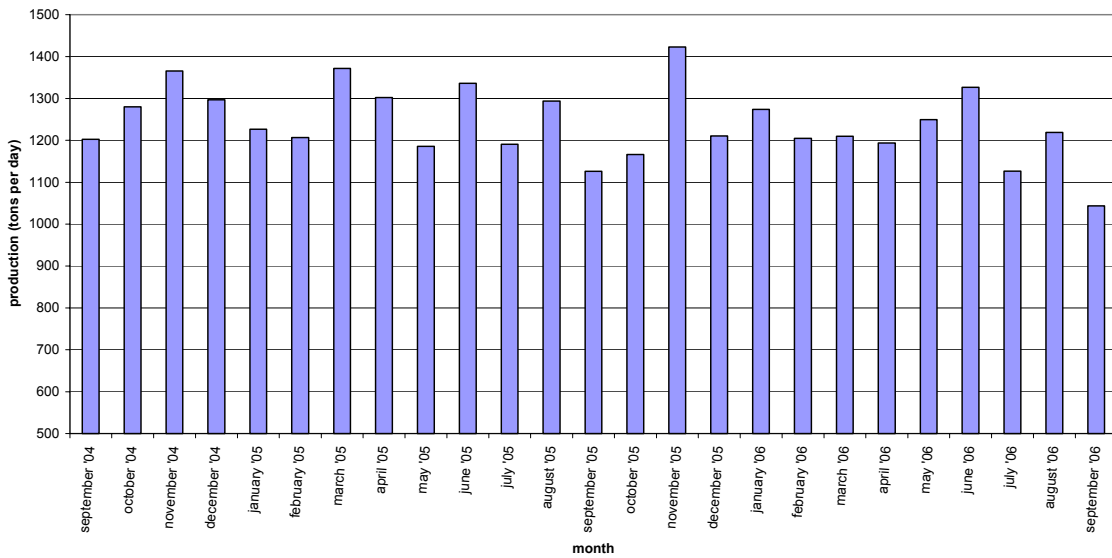
September 2006 Blue Plains Biosolids Report

In September, biosolids hauling averaged 1044 wet tons per day. The graph below shows the hauling by contractor for the month of September. A second graph shows the average daily production per month for the previous 24-month period.

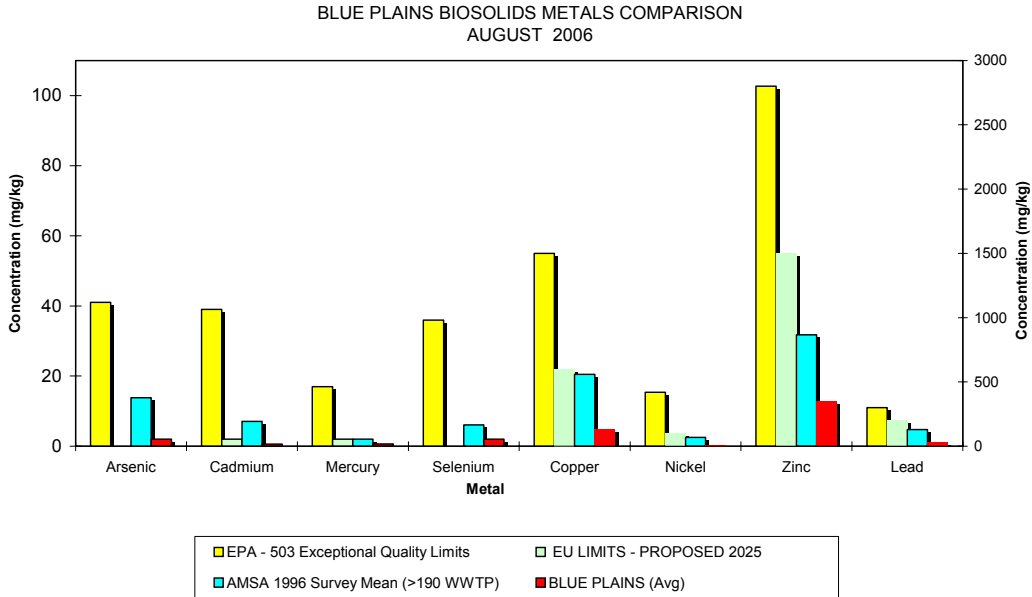
Average Daily Hauling by Contractor for September, 2006



Average Daily Biosolids Production



The graphs below show the EPA regulated heavy metals in the Blue Plains biosolids for the month of August 2006. As can be seen in the graphs, the Blue Plains levels are considerably below the regulated exceptional quality limits, the AMSA average levels surveyed in 1996, and even the proposed 2025 European Union (EU) limits.



HIGHLIGHTS

Staff participated in a National Biosolids Partnership Environmental Management System third party interim audit for one week in September. The auditors examined the biosolids policy, goals and objectives process, review of performance, EMS planning & management involvement, critical control point identification, public participation and communication, internal EMS auditing, corrective and preventive action process, and examination of EMS outcomes. The report will be ready in the next month, at which time it will be distributed to all interested parties.

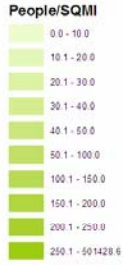
Staff attended the International Water Association Conference in Beijing, China. Staff and DCWASA sponsored researchers presented six papers and posters in the sessions with topics ranging from nutrient removal, to destruction of endocrine disruptors. All papers and posters were well received by the conference participants.

Map of Blue Plains Biosolids Applications and Agricultural \$'s for August 2006



August 2006 Biosolids Land Applied from Plant & Storages

County, Tons to Storage (if applicable)
Tons Applied, Agriculture\$



Direct from Plant

- 20 - 100
- 100 - 180
- 180 - 310
- 310 - 550
- 550 - 850

Out of Storage

- 120
- 120 - 270
- 270 - 360
- 360 - 480
- 480 - 530

