

June, 2006

Biosolids Division Monthly Report

Submitted to:

Glenn S. Gerstell
Chairman of the Board

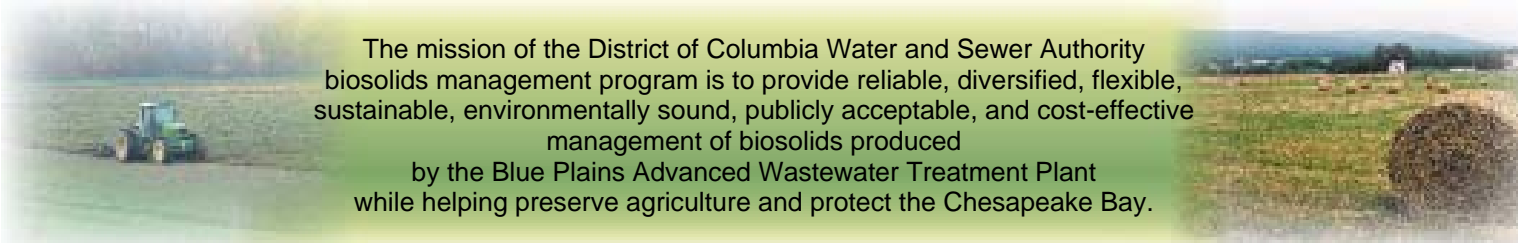
Submitted by:

Chris Peot
Biosolids Division Manager



District of Columbia Water and Sewer Authority

Biosolids Division
5000 Overlook Avenue SW
Washington, DC 20032
202-787-4329; 202-787-4226 (fax)
chris_peot@dcwasa.com

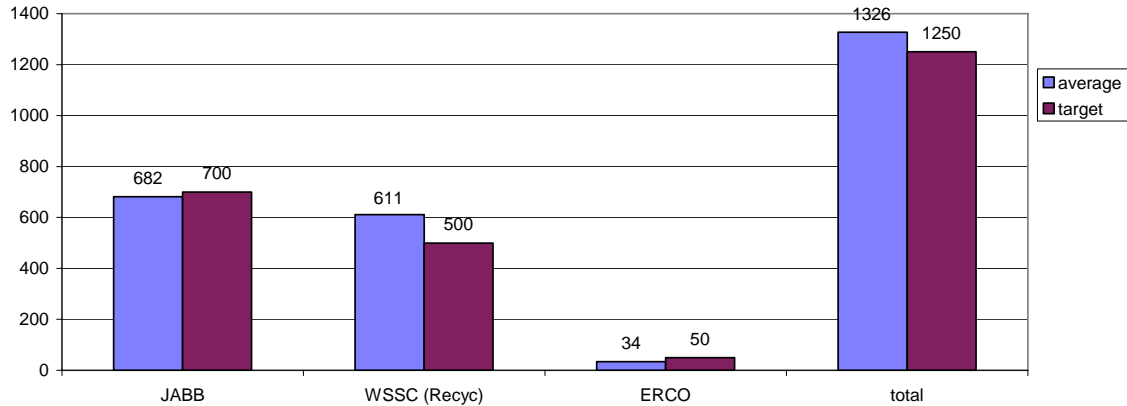
A wide-angle photograph of a rural agricultural landscape. In the foreground, a green tractor is working in a field. To the right, there are several large, round hay bales. The background shows a line of trees and a clear sky.

The mission of the District of Columbia Water and Sewer Authority biosolids management program is to provide reliable, diversified, flexible, sustainable, environmentally sound, publicly acceptable, and cost-effective management of biosolids produced by the Blue Plains Advanced Wastewater Treatment Plant while helping preserve agriculture and protect the Chesapeake Bay.

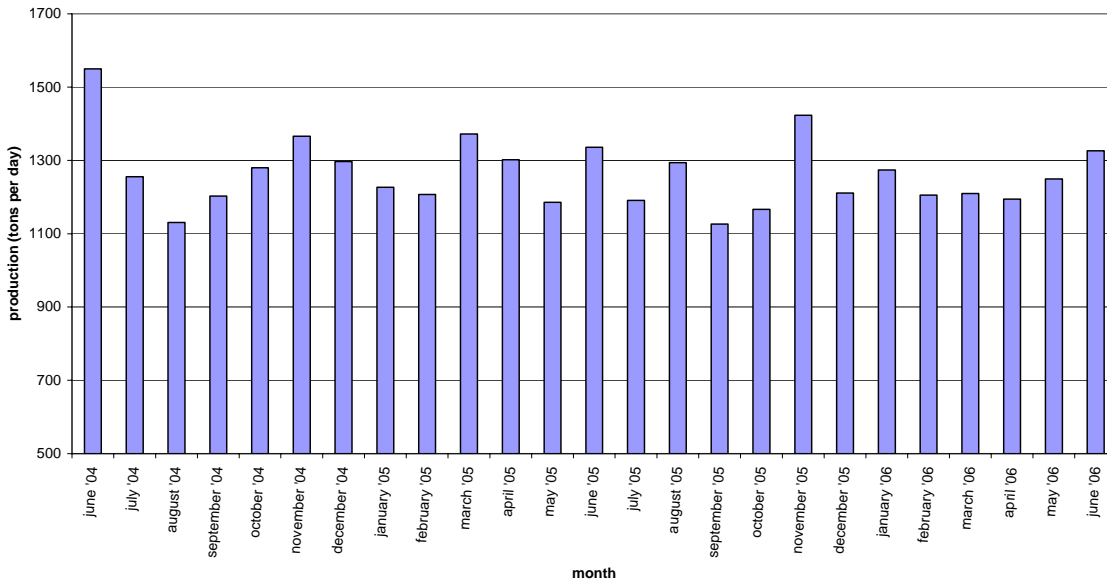
June 2006 Blue Plains Biosolids Report

In June, biosolids hauling averaged 1326 wet tons per day. The graph below shows the hauling by contractor for the month of June. A second graph shows the average daily production per month for the previous 24-month period.

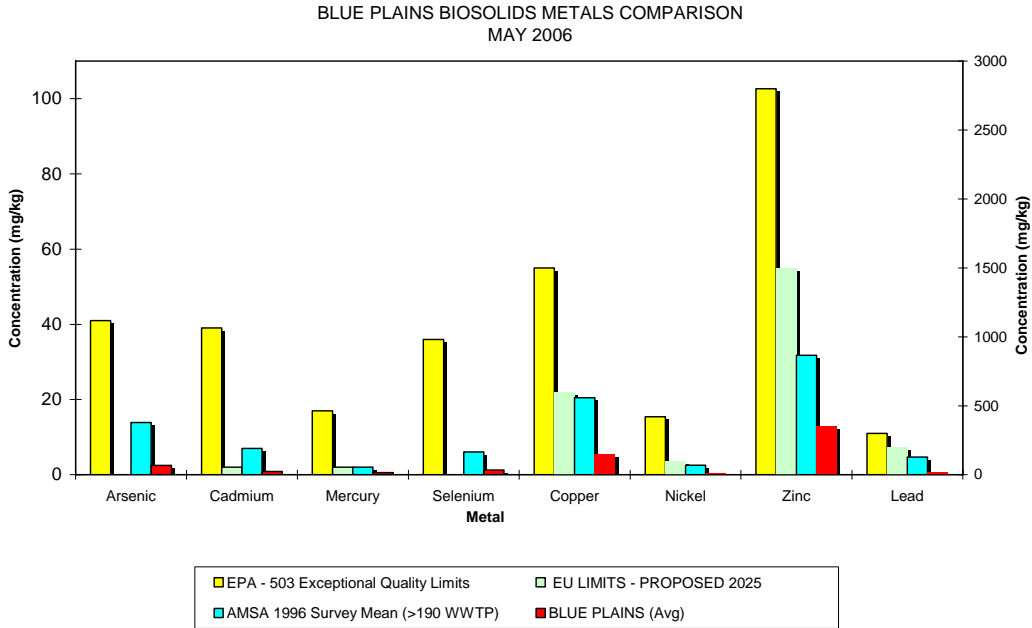
Average Daily Hauling by Contractor for June, 2006



Average Daily Biosolids Production



The graphs below show the EPA regulated heavy metals in the Blue Plains biosolids for the month of May 2006. As can be seen in the graphs, the Blue Plains levels are considerably below the regulated exceptional quality limits, the AMSA average levels surveyed in 1996, and even the proposed 2025 European Union (EU) limits.



HIGHLIGHTS

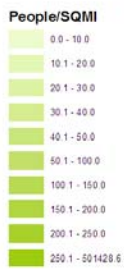
Staff met with all contractors and haulers to discuss means of achieving more efficient loading and transport of biosolids. Early mornings at the Blue Plains Advanced Wastewater Treatment Plant often see trucks lined up and waiting for biosolids in an effort to avoid traffic getting out of DC. Solutions discussed include establishing loading windows, earlier entry onto the plant, certification and self loading under our new loading silos, nighttime propping at designated truck yards, and GPS locators. Staff is working to implement these ideas. Along with loading issues, the group discussed exchanging information on field needs (distance) and plant operational data. DCWASA staff will receive long haul info and be more flexible on loading times (stay later if necessary) and will provide contractors with longer term quantity projections, based on plant parameters (biosolids volumes in settling tanks, thickener and centrifuge operating efficiency, etc.) Contractors will be better able to plan their field needs with this info.

The biosolids reuse Request for Proposal (RFP) process is proceeding as scheduled. The original RFP was canceled in favor of an RFP with modified tonnage ranges. The responses were received July 3rd, and the selection committee is scheduled to meet and discuss award scenarios on July 11th.

Map of Blue Plains Biosolids Applications and Agricultural \$'s for May 2006



May 2006 Biosolids Land Applied from Plant & Storages



County, Tons to Storage (if applicable)
Tons Applied, Agriculture\$

