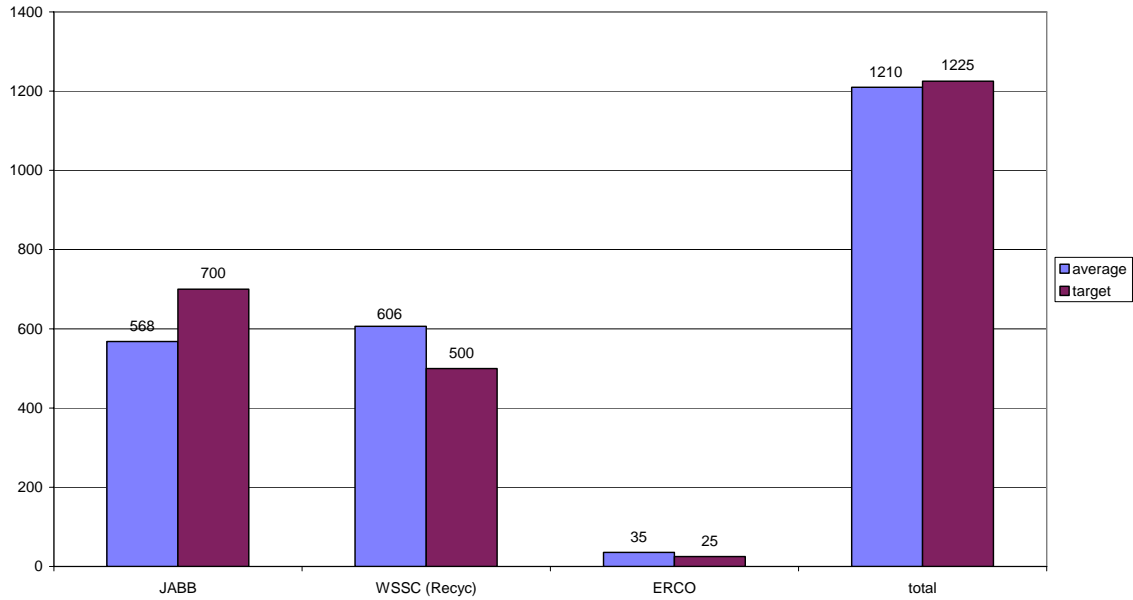


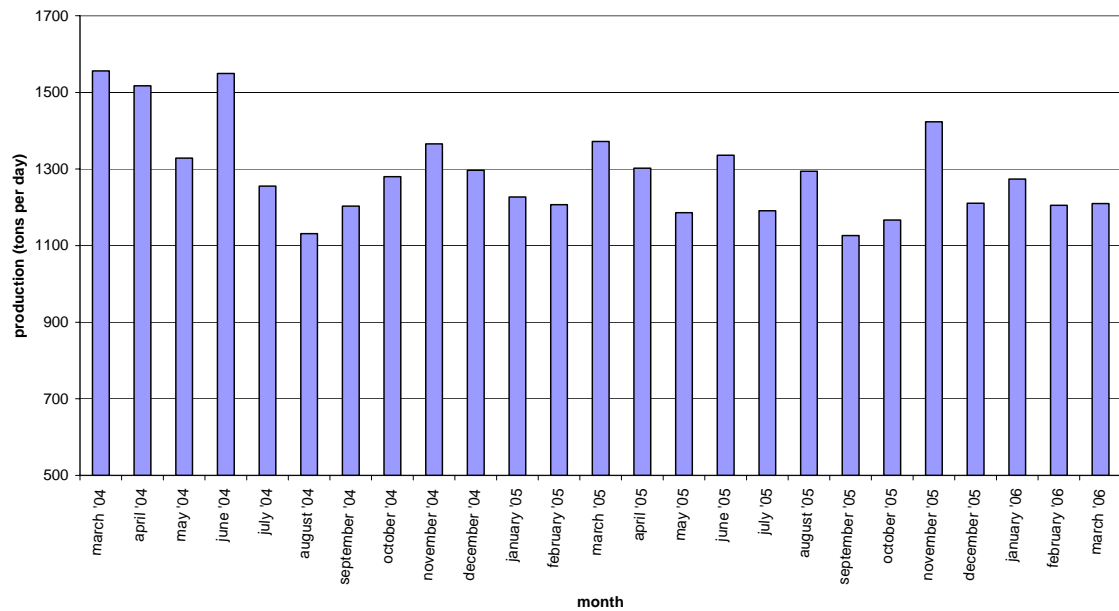
## March 2006 Blue Plains Biosolids Report

In March, biosolids hauling averaged wet tons per day. The graph below shows the hauling by contractor for the month of March. A second graph shows the average daily production per month for the previous 24-month period.

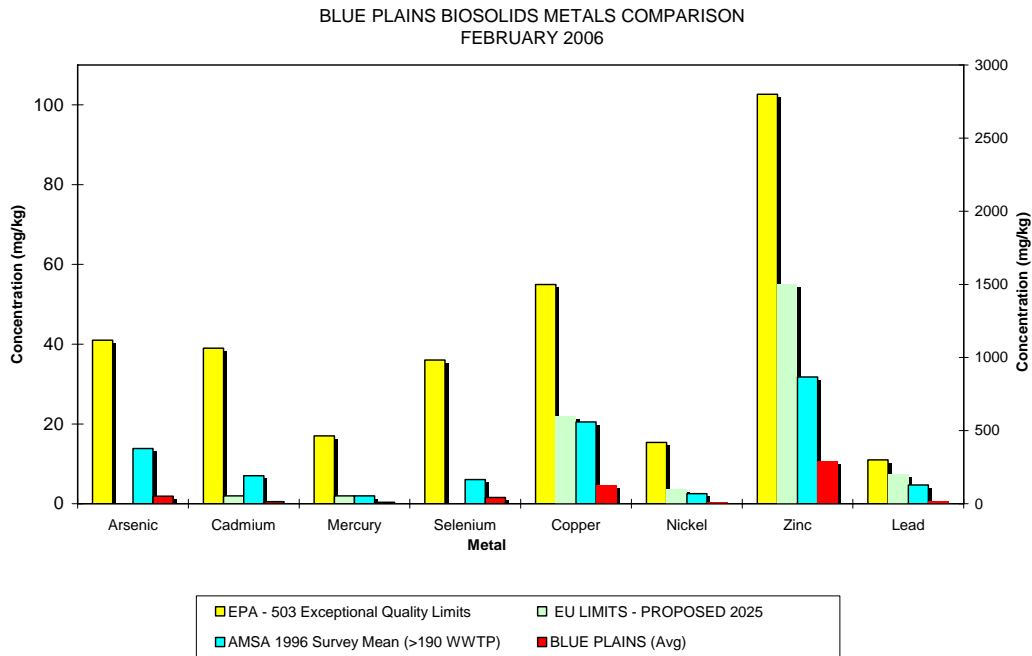
Average Daily Hauling by Contractor for March, 2006



Average Daily Biosolids Production



The graphs below show the EPA regulated heavy metals in the Blue Plains biosolids for the month of February 2006. As can be seen in the graphs, the Blue Plains levels are considerably below the regulated exceptional quality limits, the AMSA average levels surveyed in 1996, and even the proposed 2025 European Union (EU) limits.



## HIGHLIGHTS

Staff attended the annual Water Environment Federation (WEF) Residuals Conference in Cincinnati. The conference highlights innovations in technology and research findings for the past year. Staff attended several meetings to discuss research findings, regulatory developments, and EMS strategies for improving the performance of biosolids reuse programs.

Staff met with researchers at the United States Department of Agriculture (USDA) Beltsville Agricultural Research Station (BARC) to discuss mutually beneficial projects. Discussions ranged from energy recovery from biosolids reuse programs, residual reuse to preserve open space and protect riparian zones, green roof designs, and local reuse of biosolids. Participants agreed that a research relationship between DCWASA, USDA, and COG would benefit all parties involved. USDA and DCWASA staff will next meet with USDA management to discuss proposed projects.

Staff, in conjunction with the Biosolids Cross Functional Team (CFT), developed draft language for the next biosolids reuse RFP. Staff solicited comments, and incorporated them before sending to procurement for review. The schedule, as proposed by the WASA Procurement Director, is as follows.

April 15th - RFP on the street

June 30th - submittal deadline, responses in hand

July – Blue Plains Technical Committee meets to choose next biosolids contract

September - bring decision to Blue Plains Operations committee

October - bring decision to WASA Board meeting

November 14th - begin work

# Map of Blue Plains Biosolids Applications and Agricultural \$'s for February 2006



## February 2006 Biosolids Land Applied from Plant & Storages

County, Tons to Storage (if applicable)  
Tons Applied, Agriculture\$

