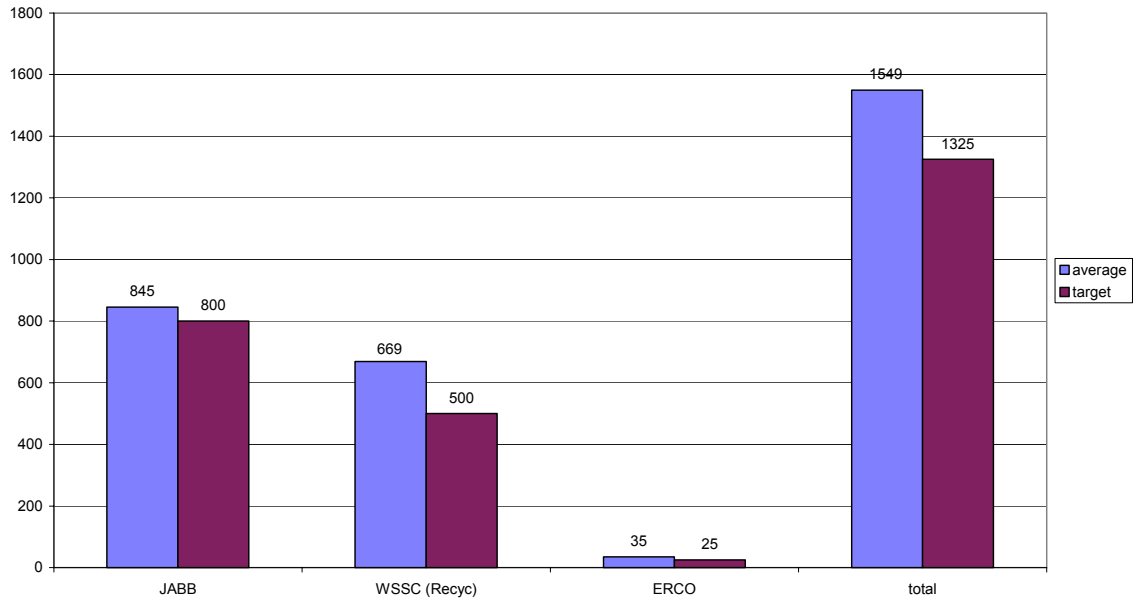


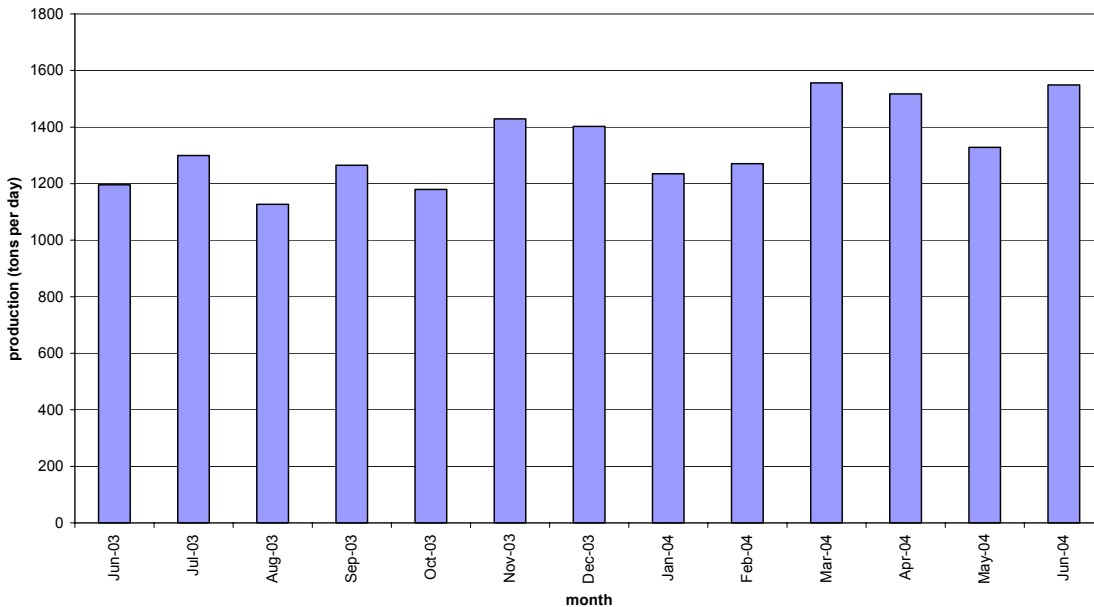
## June 2004 Blue Plains Biosolids Report

In June, biosolids hauling averaged 1549 wet tons per day. The graph below shows the hauling by contractor for the month of June. A second graph shows the average daily production per month for the previous 12-month period. This production was higher than normal, as production generally decreases during the summer months. All contractors did a commendable job of keeping the plant empty.

Average Daily Hauling by Contractor for June, 2004

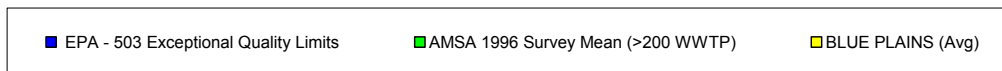
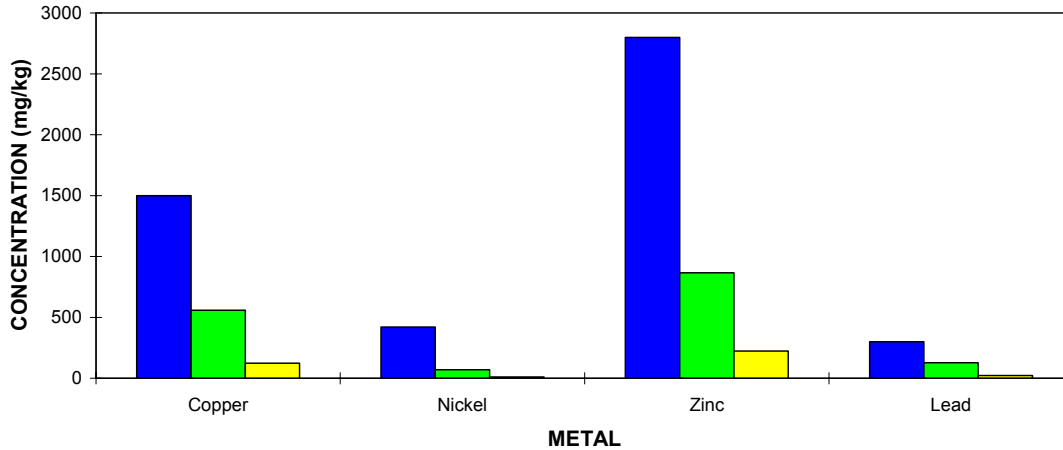
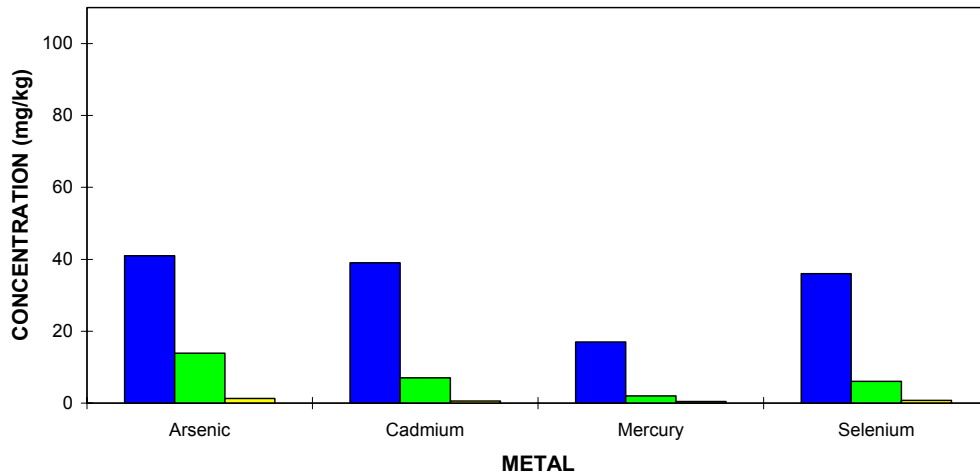


Biosolids Average Daily Production

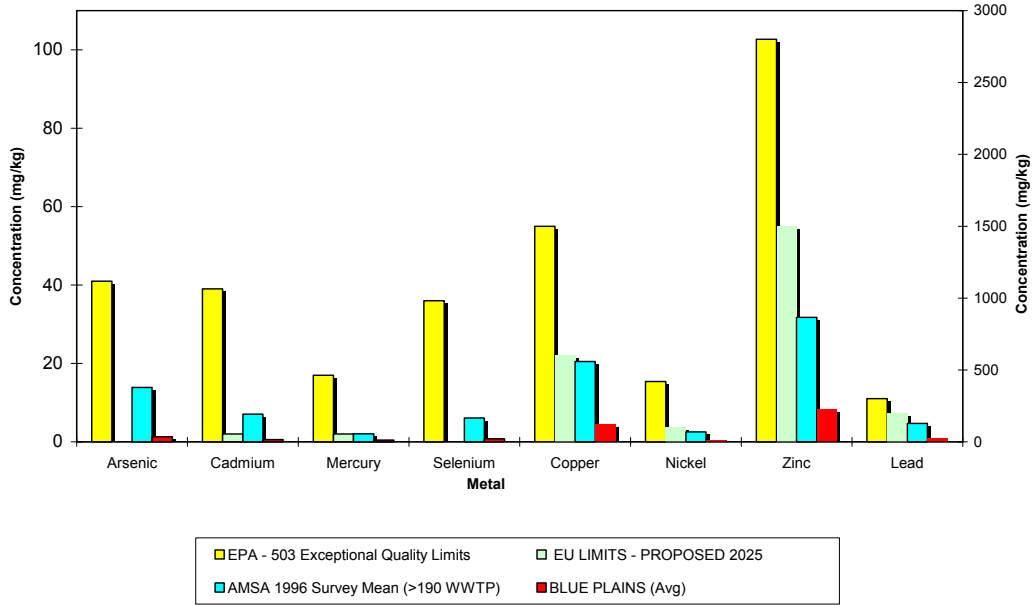


The graphs below show the EPA regulated heavy metals in the Blue Plains biosolids for the month of May 2004. As can be seen in the graphs, the Blue Plains levels are considerably below the regulated exceptional quality limits, the AMSA average levels surveyed in 1996, and even the proposed 2025 European Union (EU) limits.

**BLUE PLAINS BIOSOLIDS METALS COMPARISON  
MAY 2004**



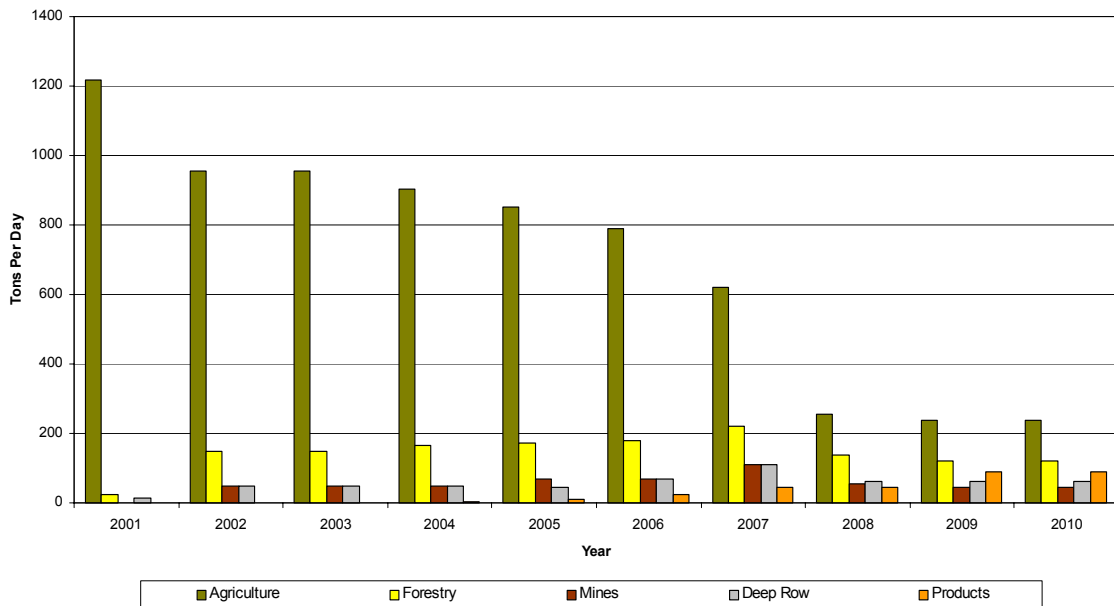
BLUE PLAINS BIOSOLIDS METALS COMPARISON  
MAY 2004



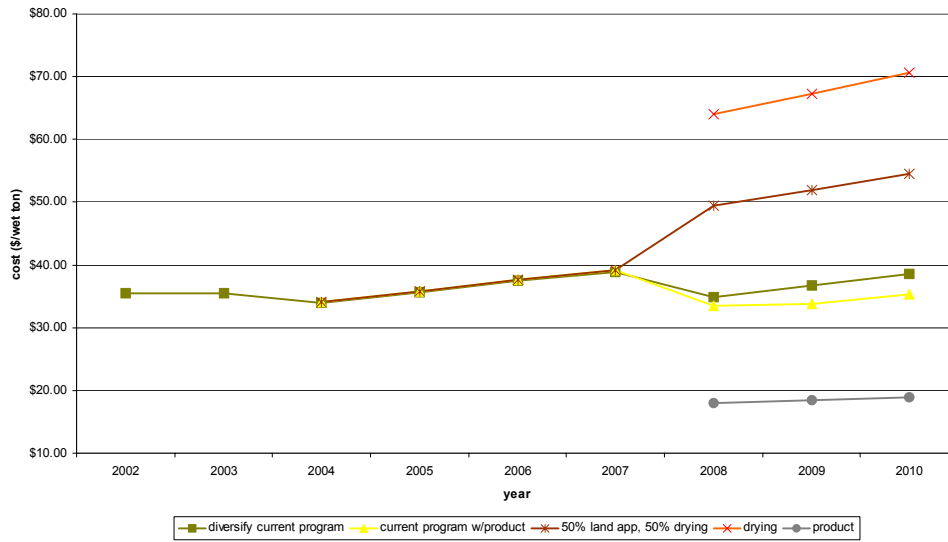
## HIGHLIGHTS

Staff presented a biosolids master plan to the Blue Plains Technical Committee last month in an effort to show how research dollars are funding projects designed to diversify the program and reduce costs. The Blue Plains biosolids program is designed to remain diverse, flexible, and economically feasible. The graphs below shows the projected diversification based on ongoing and proposed research projects. The second graph shows the projected spending based on the diversification efforts.

### Blue Plains Biosolids Management Program Diversification Efforts



# Biosolids Program Management Options Cost Estimates



## Map of Blue Plains Biosolids Applications and Agricultural \$'s for May 2004

