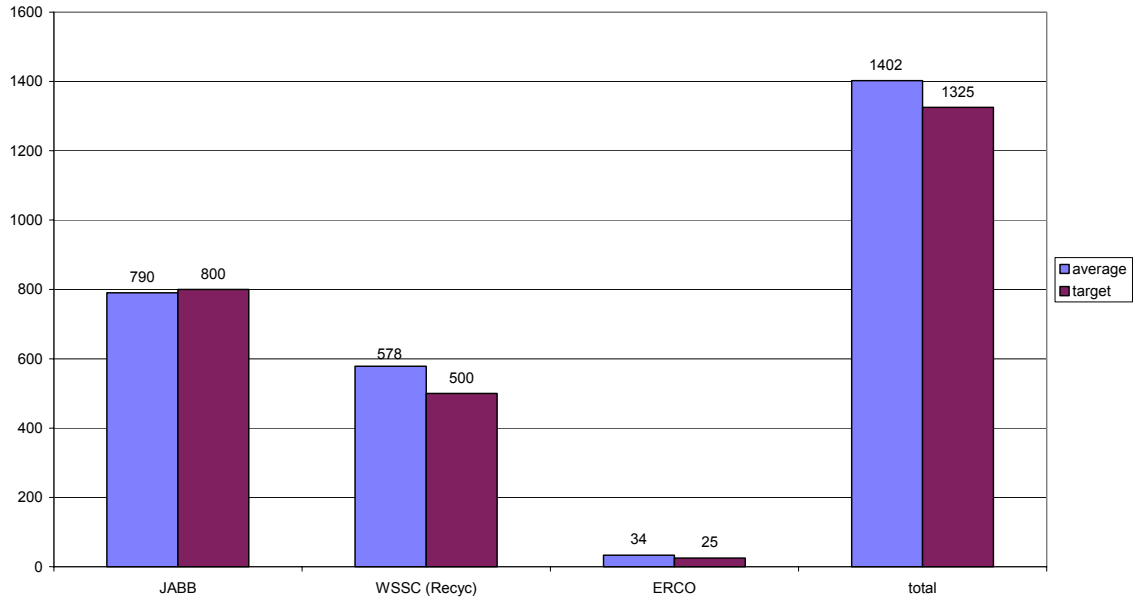


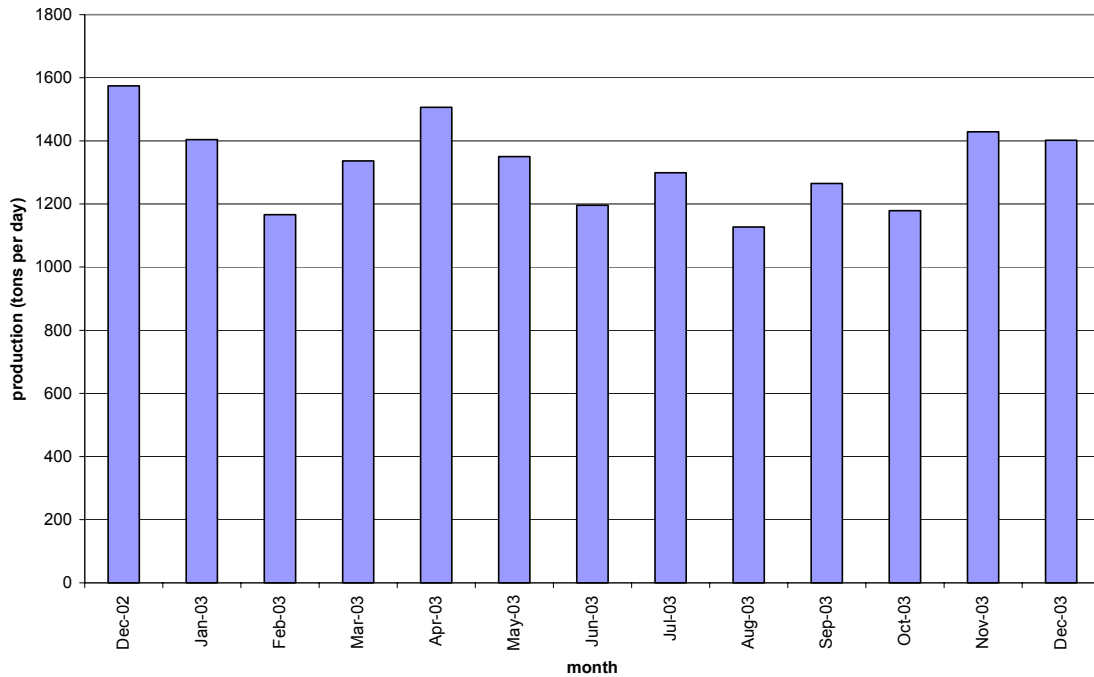
January 2003 General Managers Report – Biosolids Management

In November, biosolids hauling averaged 1429 wet tons per day. The graph below shows the hauling by contractor for the month of November. A second graph shows the average daily production per month for the previous 24-month period.

Average Daily Hauling by Contractor for December, 2003

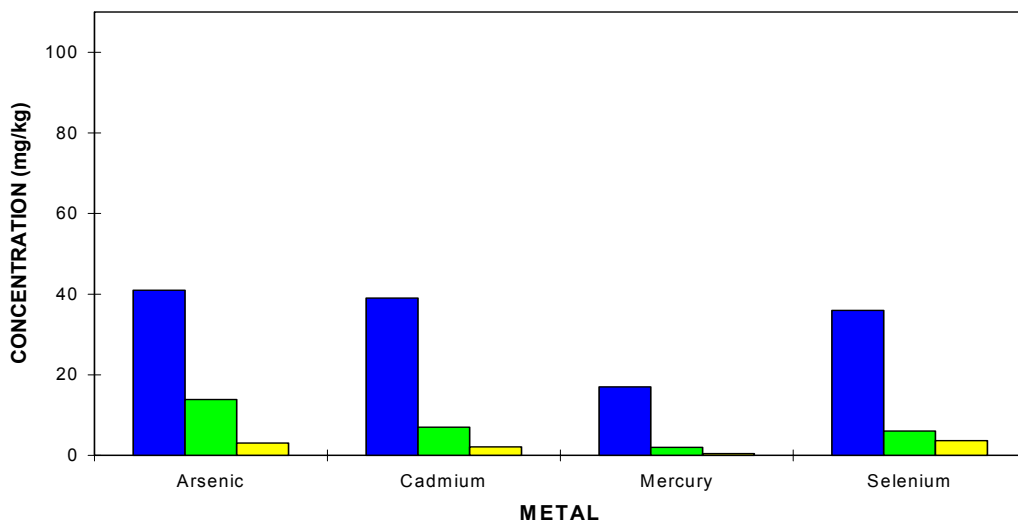
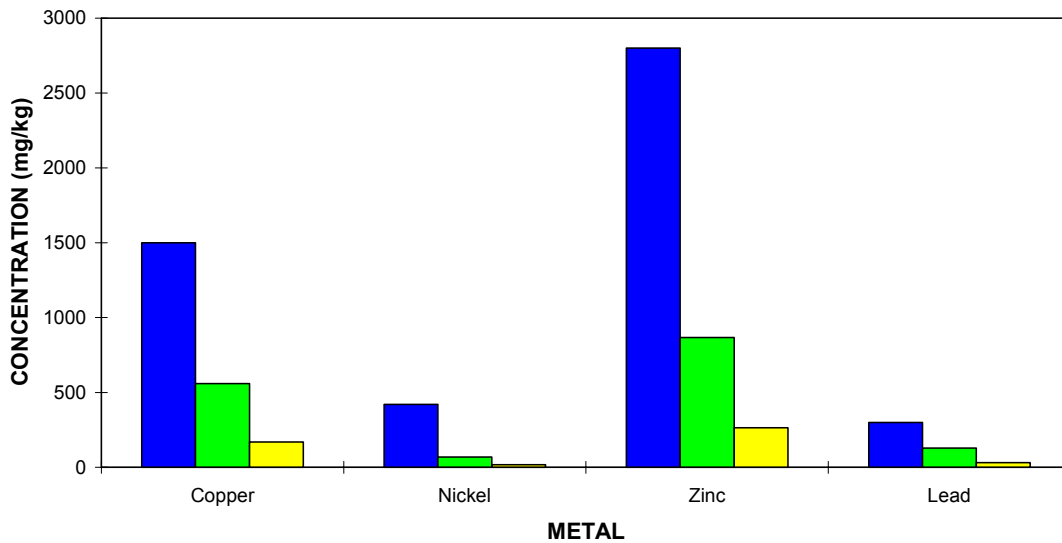


Biosolids Average Daily Production



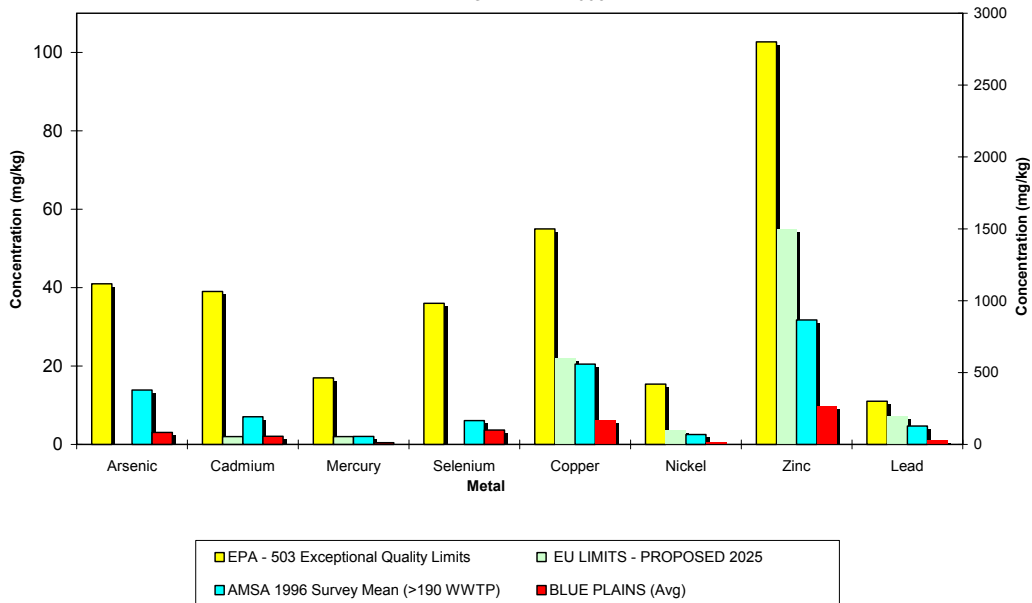
The graphs below show the EPA regulated heavy metals in the Blue Plains biosolids for the month of November 2003. As can be seen in the graphs, the Blue Plains levels are considerably below the regulated exceptional quality limits. Staff has gathered information on European Union (EU) limits, which are considerably lower than EPA levels and are often used by those opposed to the use of biosolids as model limits. The third graph below shows that Blue Plains biosolids meet the proposed year 2025 EU metals limits for biosolids, proving that Blue Plains biosolids compares favorably to the EU limits.

**BLUE PLAINS BIOSOLIDS METALS COMPARISON
NOVEMBER 2003**



■ EPA - 503 Exceptional Quality Limits
 ■ AMSA 1996 Survey Mean (>190 WWTP)
 ■ BLUE PLAINS (Avg)

BLUE PLAINS BIOSOLIDS METALS COMPARISON
NOVEMBER 2003



HIGHLIGHTS

Staff coordinated a meeting of the Biosolids Odor Research Group (BORG), a team of nationally recognized experts in biosolids research and odors. The meeting was a research idea exchange and a preparatory session for a BORG workshop at the WEF Residuals conference in Salt Lake City. DCWASA will have three presenters at the workshop, and several others at the conference. Staff will be presenting or co-authoring at least 8 papers/presentations for the conference.

Staff has exchanged information and ideas with a group of concerned public citizens in Lancaster County, VA concerning the potential for well contamination. Staff has, in the recent past, visited with the group and toured well sites. After discussing the issue, staff invited a water quality and well expert from Prince George's County to discuss the issue at the monthly biosolids cross-functional team meeting. Many issues were discussed, and although not all questions were answered, staff feels better educated on the issue and better suited to discuss the problem. This was conveyed to the concerned citizens, and it was agreed that we would continue to share information on this issue.

Map of Blue Plains Biosolids Applications and Agricultural \$'s for November 2003



November 2003 Biosolids Land Applied from Plant & Storages

