



District of Columbia Water and Sewer Authority
David L. Gadis, CEO and General Manager

Northeast Boundary Tunnel Project Tunnel Forum Meeting

(4th Street, NE and Rhode Island Avenue, NE)

Thursday, October 3, 2019

**Inspired Teaching Demonstration School
200 Douglas Street NE**



Agenda

1. **Neighborhood Traffic and Pedestrian Improvements – Matt Wolniak, Traffic Engineer**
2. **Review of Safety and Security Measures – Shane Yaganisawa, Project Director**
3. **What's Next – Construction Look Ahead – Shane Yaganisawa, Project Director**
4. **Questions, Comments & Answers**

Anacostia River Tunnel System Performance to Date

Month	Rainfall, (in)	Volume Captured by Tunnel (MG)	Measured Overflow (MG)	Total (captured + OF)	% captured
March 20 -31, 2018	1.48	20	0	20	100%
April 2018	3.59	249	10	259	96.0%
May 2018	8.73	860	13	873	98.5%
June 2018	5.21	265	47	311	85.0%
July 2018	9.73	679	260	939	72.3%
August 2018	5.19	334	14	349	95.9%
September 2018	9.73	784	116	900	87.1%
October 2018	3.06	164	0	164	100%
November 2018	7.57	777	5	782	99.3%
December 2018	5.82	468	100	568	82.3%
January 2019	3.30	259	0	259	100%
February 2019	3.52	74	0	74	100%
March 2019	4.00	337	46	384	87.9%
April 2019	2.24	77	0.1	77	99.9%
May 2019	5.36	311	1	312	99.7%
June 2019	4.27	134	0.1	134	100.0%
July 2019	6.49	339	77	416	81.4%
August 2019	2.10	183	18	201	91.1%
Total	91.39	6312	709	7022	90%

- Over 6.3 billion gallons captured to date
- Over 2,500 tons of trash, debris, and other solids captured
- Exceeding predicted capture rate (90%>80%)
- First year in operation was the wettest year on record for the District of Columbia



April 2018



November 2018

Trash and debris removed from CSO captured by tunnel at ECF Fine Screens

Neighborhood Map



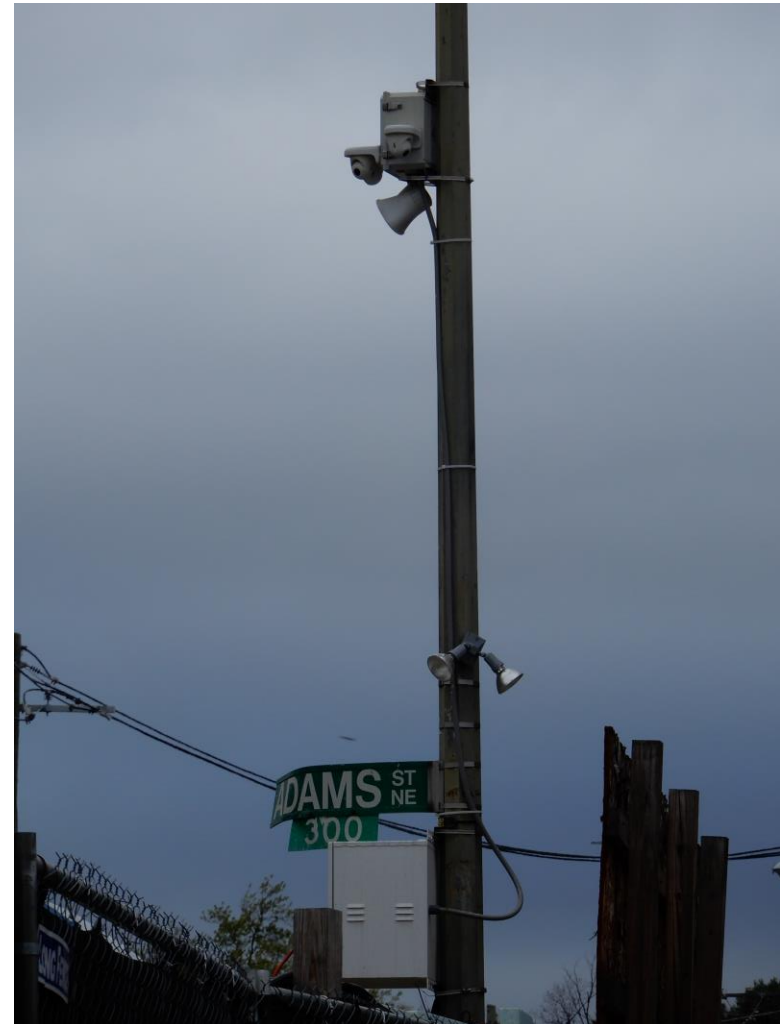
Neighborhood Traffic and Pedestrian Safety Improvements and Action Items Update

- Pedestrian Safety Improvements and Recommendations
 - 3rd Street, NE – adding signing to increase visibility (DDOT review)
 - 4th Street, NE – adding sign
- Improvements for the left turn from Rhode Island Avenue, NE, eastbound to Lincoln Road will be implemented soon.
- Coordination is taking place between the multiple other construction projects for traffic control plans.
- DDOT has received plans for repairing the signing at Lincoln Road and V Street, NE
- Signal timing adjustments have taken place.



Review of Safety and Security Measures at 4th Street, NE

- Security detail stationed at the construction site.
 - Cameras are in place to monitor the Site and record activities.
 - Lighting is placed around the perimeter of the site facing outward.
 - Security personnel are in place to patrol the construction site.
 - Metropolitan Police Department (MPD) patrols public spaces.
 - **If you witness an Emergency, call 911 immediately.**



What's Next Construction Look Ahead (4th Street, NE Site)

- **Saturday Work Activity**
- **Jet Grout for Near Surface Structures**
- **Shaft Excavation (Horizontal Freeze Pipes)**
- **Median Removal**
- **Adit (Vertical Freeze Pipes)**
- **Concrete Liner for Shaft**

4th Street, NE – Median Removal Traffic Impact

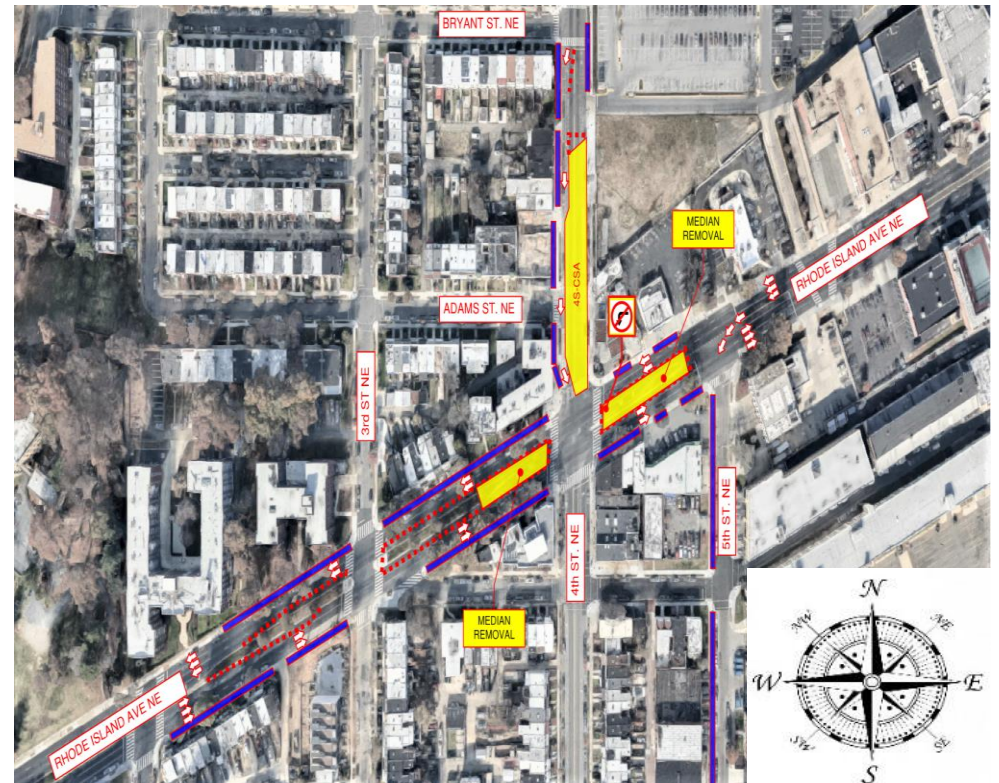
Construction Dates Are Approximate





IMPACTS:

- Loss of 1 lane of travel on Rhode Island Avenue NE westbound from McDonald's to the 4th Street construction site.
- Travel restriction lifted once past the site.

DATES/DURATION:

- Now until mid-October 2019



	CONSTRUCTION WORK ZONE
	PARKING RESTRICTIONS
	MAINTENANCE OF TRAFFIC DEVICES (Cones, Jersey Barrier, etc..)
	NO LEFT TURN SIGN

4th Street, NE – Adit (Vertical Freeze Pipes)

Traffic Impact

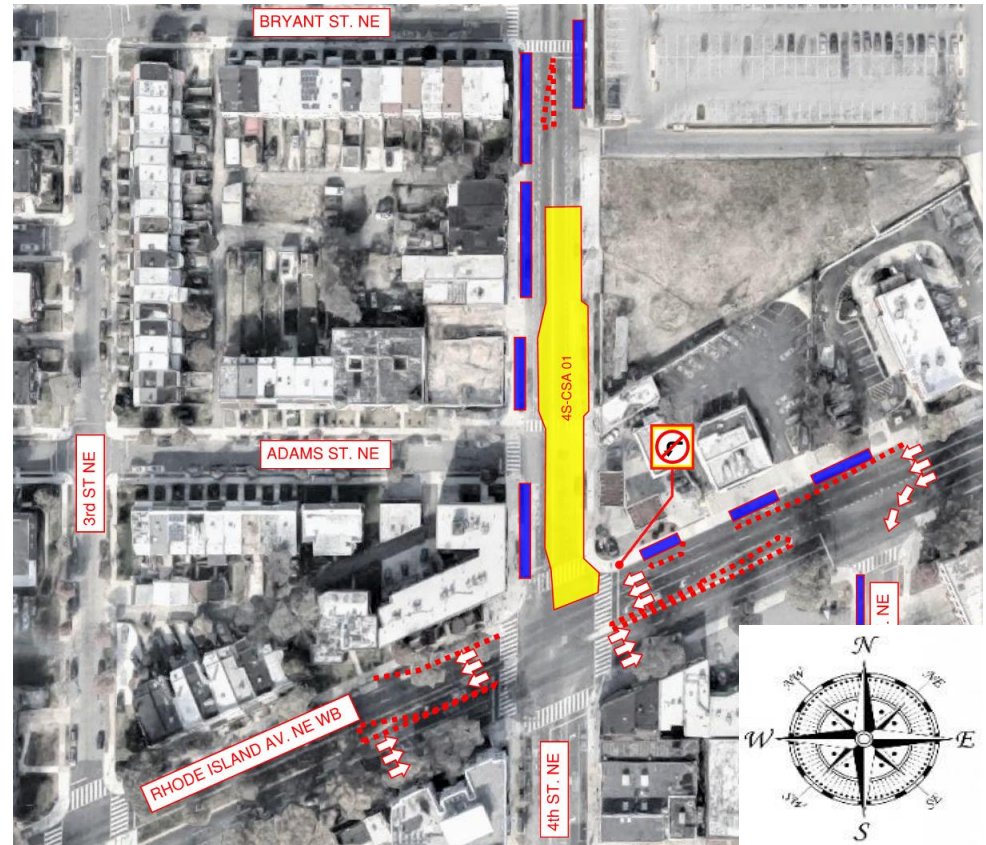
Construction Dates Are Approximate





IMPACTS:

- ALL Lanes are shifted on Rhode Island Avenue NE.
- 3-lanes in each direction.
- Travel restriction lifted once past the site.

DATES/DURATION:

- October 2019 – January 2020



	CONSTRUCTION WORK ZONE
	PARKING RESTRICTIONS
	MAINTENANCE OF TRAFFIC DEVICES (Cones, Jersey Barrier, etc..)
	NO LEFT TURN SIGN

4th Street, NE – Adit (Vertical Freeze Pipes) Pedestrian Impact

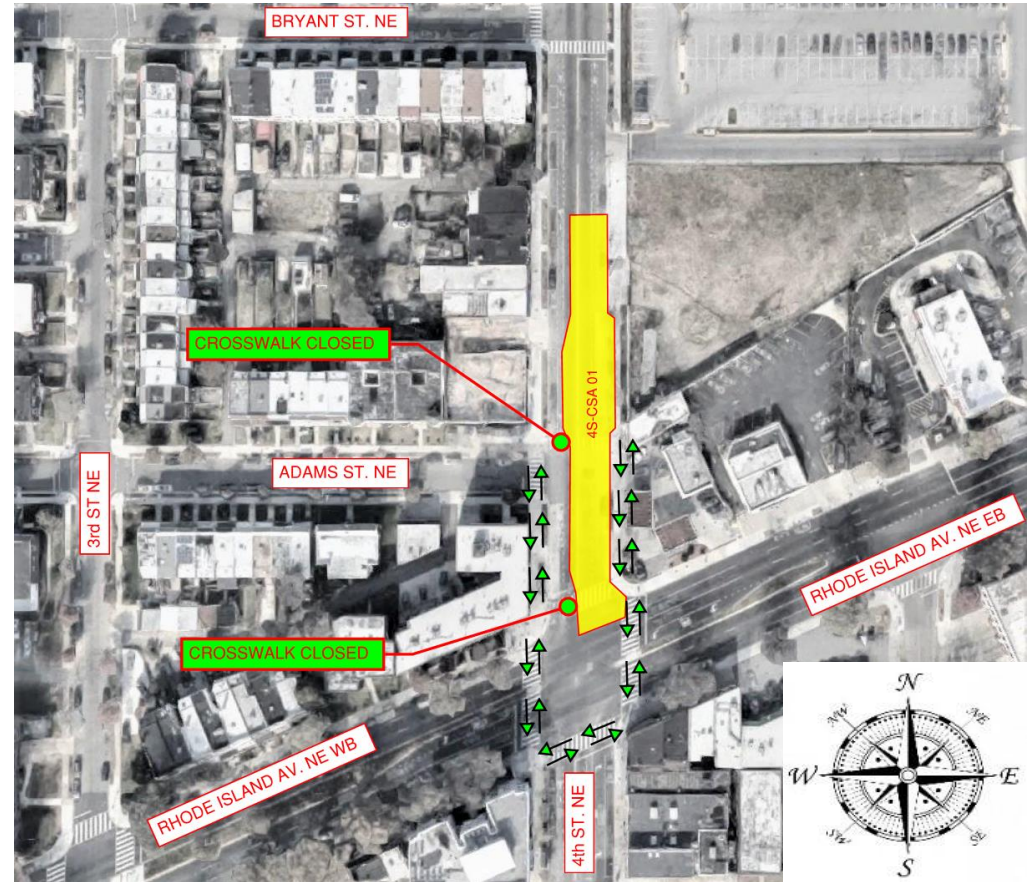
Construction Dates Are Approximate

IMPACTS:

- Loss of crosswalk.
- Crosswalk across 4th Street at Rhode Island Avenue NE, -- closed to pedestrians.
- Use caution when crossing and obey all pedestrian detour signs
- Flaggers on site.

DATES/DURATION:

- Now until January 2020



- CONSTRUCTION WORK ZONE
- PARKING RESTRICTIONS
- MAINTENANCE OF TRAFFIC DEVICES (Cones, Jersey Barrier, etc.)
- Green Arrows = PEDESTRIAN DETOUR ROUTE

What's Next Construction Look Ahead (Rhode Island Avenue, NE Site)

- **Adit (Vertical Freeze Pipes)**

Rhode Island Avenue, NE – Adit (Jet Grouting)

Traffic Impact

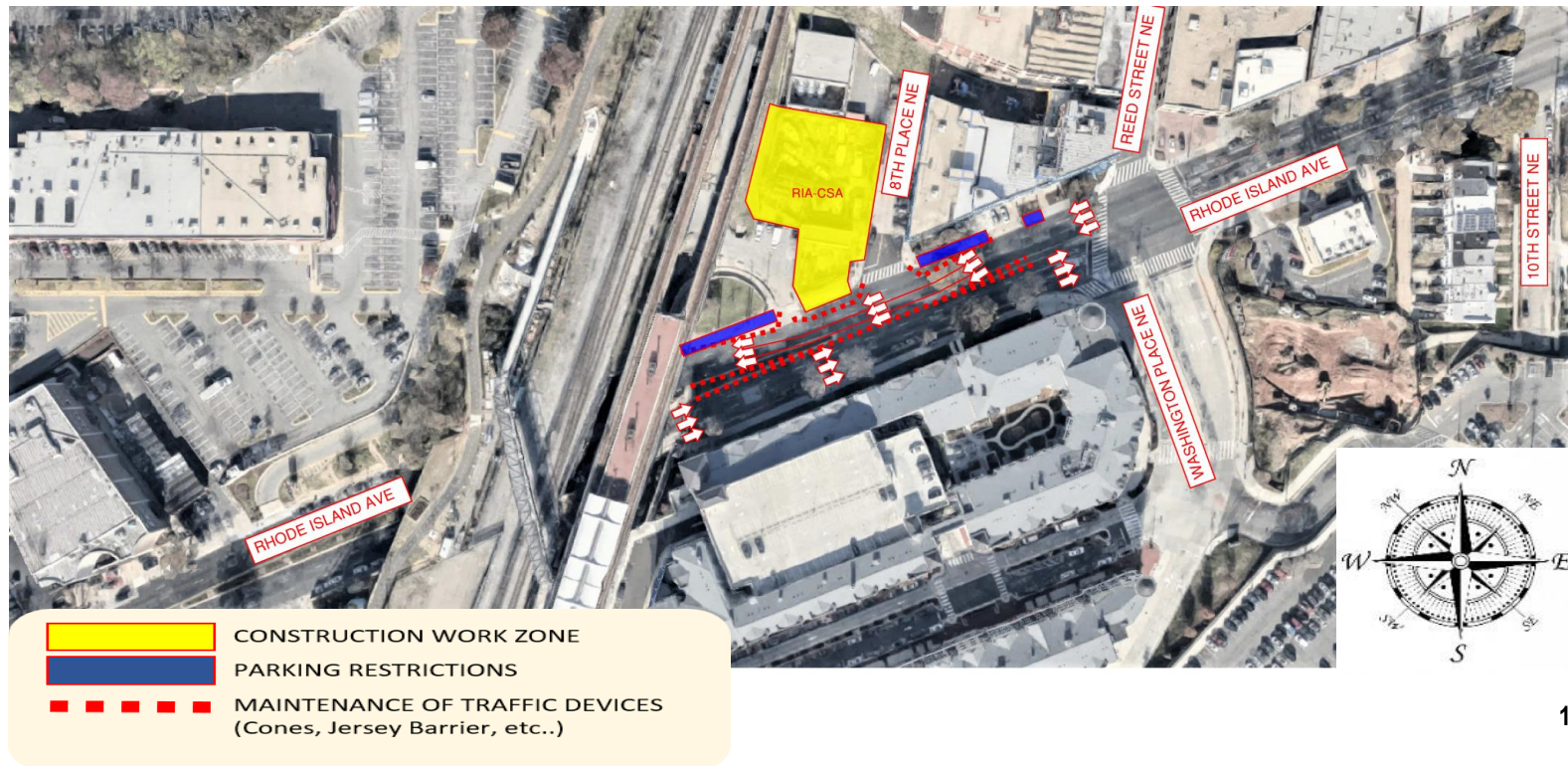
Construction Dates Are Approximate

IMPACTS:

- Three lanes of traffic in both directions along Rhode Island Avenue, NE.
- Parking restrictions in place on Rhode Island Avenue between Reed Street and the WMATA bridge.

DATES/DURATION:

- September 2019 – October 23, 2019; and then again on December 2019 – February 2020



Rhode Island Avenue, NE – Jet Grouting

Traffic Impact

Construction Dates Are Approximate

IMPACTS:

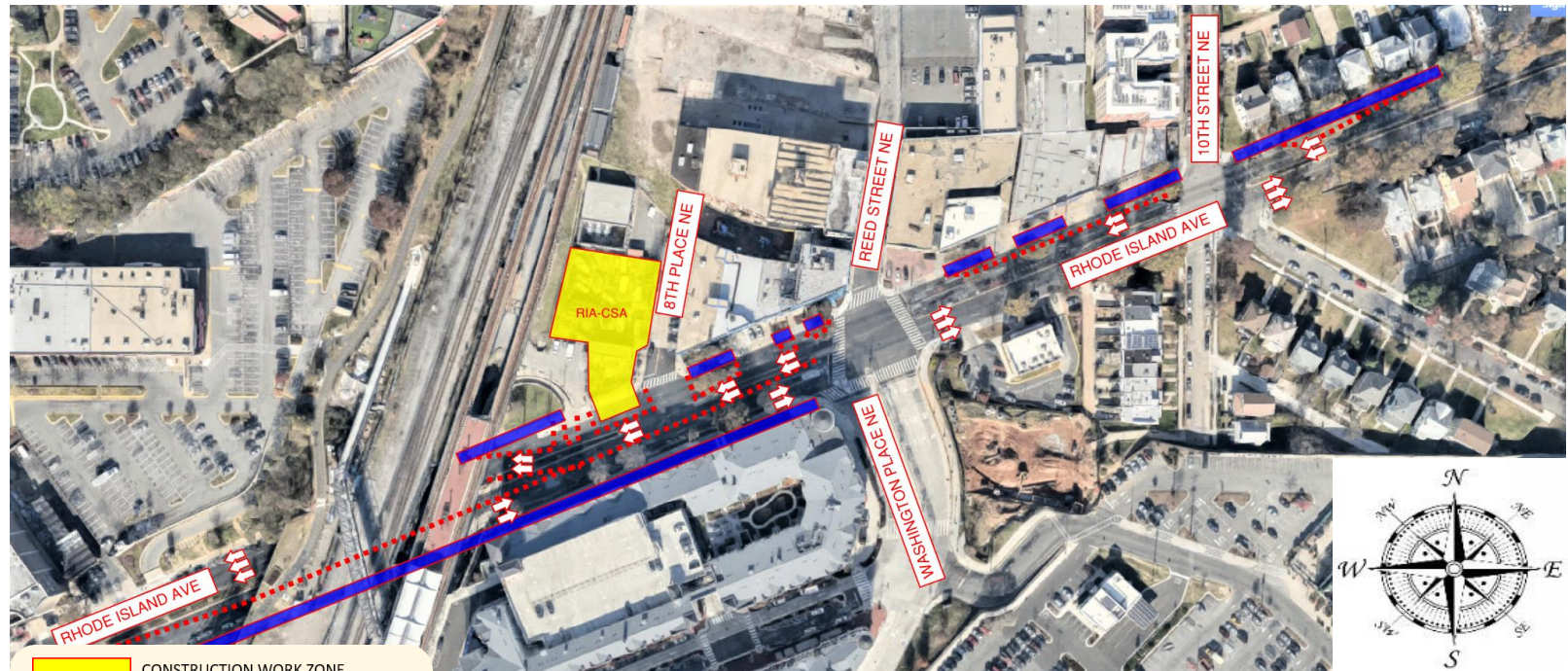
- Two lanes of traffic in both directions along Rhode Island Avenue, NE.
- Parking restrictions in place between Rhode Island Avenue and Reed Street, as




well as the WMATA bridge

- No Pedestrian Impact

DATES/DURATION:

- October 23, 2019 – December 2019



	CONSTRUCTION WORK ZONE
	PARKING RESTRICTIONS
	MAINTENANCE OF TRAFFIC DEVICES (Cones, Jersey Barrier, etc..)

Questions, Comments & Answers



Questions & Comments

Please complete the comment card provided.

For More Info

- **24/7 NEBT Hotline:** (800) 988-6151
- **Email:** dccleanrivers@dcwater.com
- **Website:** dcwater.com/NEBT