

SANITARY SEWER SYSTEM REHABILITATION: MUDDY BRANCH AT PENNYFIELD LOCK ROAD



CONTACT INFO

Potomac Interceptor Rehab
dcwater.com/potomacinterceptor
Potomac.interceptor@dwater.com
202-787-4096

DC Water 24-Hour Emergency Center
202-612-3400

A part of DC Water's Potomac Interceptor Program

Beginning in June 2026, DC Water will begin emergency rehabilitation work on a section of the Potomac Interceptor near Muddy Branch on Pennyfield Lock Road in Potomac, Maryland. The work is being done after sections of the pipe showed corrosion that if not immediately addressed could lead to worsening conditions and future failure.

The Potomac Interceptor carries wastewater from Washington Dulles International Airport, Loudoun County, Virginia, Potomac, Maryland, and the District of Columbia to DC Water's Blue Plains Advanced Wastewater Treatment Plant. It's a vital piece of infrastructure for the region and carries about 60 million gallons of wastewater each day for the entire sewer line, compared to only about 6 million gallons in a typical day for this section that connects to the main interceptor.

There is no current emergency, overflow or impact to drinking water.

As a precaution, DC Water is performing daily visual inspections along the pipe section and has installed monitoring equipment that can quickly detect changes in flow that may indicate leakage or a break. The rehabilitation includes about 1700 linear feet of pipe, and once complete will strengthen the system and help prevent future service disruptions.

DC Water will use a method called slip lining to rehabilitate the pipe. This process involves installing a new fiberglass-reinforced pipe inside the existing sewer line, creating a strong, corrosion-resistant pipe within the original line. This method limits the need for large-scale excavation and restores the pipe to like-new conditions.

To prepare for the slip lining, crews will excavate two temporary access points, called push pits, where the new pipe sections will be installed. Early construction will include site preparation, equipment mobilization, and deliveries of specialized pipe materials needed for the repair

Restoring this section of the Potomac Interceptor will help reduce the risk of unexpected pipe failures in the future, protect public health and the environment, and support reliable wastewater service for the community and the region.

POTOMAC INTERCEPTOR REHAB

SCHEDULE

- June – September 2026
- 7 a.m. to 5 p.m.

A LARGE-DIAMETER PIPELINE

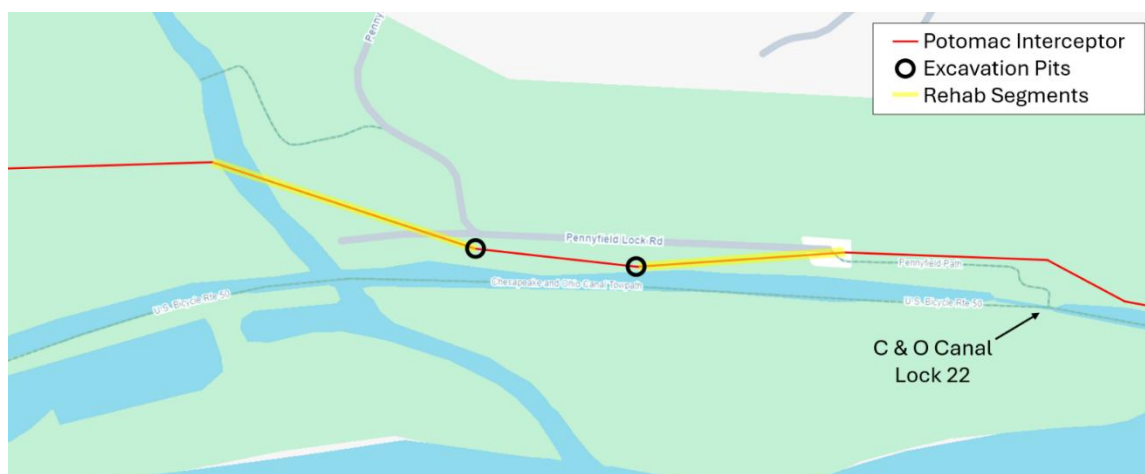
The section being rehabilitated is 60-inches (5 feet) in diameter and connects as part of the larger regional sewer system.

A TRENCHLESS REHAB METHOD

Slip lining restores aging pipelines by installing new, smaller-diameter pipe inside the existing sewer line to improve structural integrity to like new conditions without digging up the entire section of sewer line.

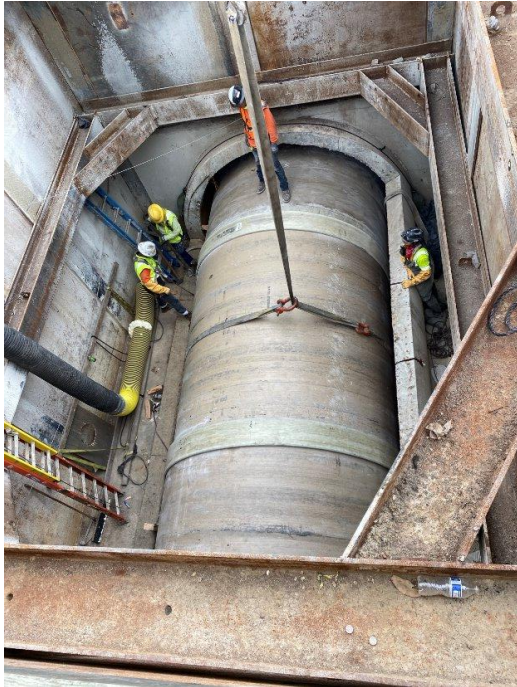
INVESTING IN RELIABILITY

DC Water continues to proactively assess and rehabilitate critical infrastructure to support long-term system performance and resilience.



WHAT IS SLIPLINING?

SLIPLINING- A common method to repair or rehabilitate existing sewer lines, water mains, and storm drains, by inserting a new, smaller pipe (the liner) inside the existing pipe. The process requires minimal excavation, making it less disruptive. Instead the liner is pushed or pulled into the existing pipe, and the space between the two pipes is sealed with grout or other materials. This strengthens the pipe with a new, corrosion resistant pipe, restoring the line to like-new conditions.



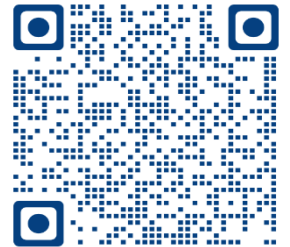
(Photo 1): Shows a typical launch and receiving pit where new pipe segments are pushed into the existing sewer pipe.



(Photo 2): Shows a typical 51-inch fiberglass reinforced pipe that will be used to slipline this section of the Potomac Interceptor.

Scan the QR code for more information on the Potomac Interceptor.

Scan here →



POTOMAC INTERCEPTOR HISTORY AND FACTS

1960- The 86th U.S. Congress authorized Public Law 86-515 for the funding and construction of the Potomac Interceptor on June 12, 1960.

1964- The Potomac Interceptor, tying northern Fairfax County and parts of Loudoun County, and Montgomery County, to the DC Blue Plains plant, is christened with its first sewage flows.

The Potomac Interceptor serves parts of Fairfax and Loudoun Counties, Town of Vienna, Herndon, Dulles Airport in VA, and Montgomery County, MD.

- Blue Plains Service Area
- Potomac Interceptor
- ★ Blue Plains Advanced Wastewater Treatment Plant



54+

Potomac Interceptor length in miles

11

Tunnel sections

2

River Tunnel Crossings

36"-96"

Diameter in inches of pipe size on Potomac Interceptor