

ROCK CREEK SEWER SEPARATION PROJECT CSO 031

OVERVIEW

The Rock Creek Sewer Separation Project is an activity of DC Water's Long Term Control Plan (LTCP). The LTCP is required by the U.S. Environmental Protection Agency (EPA) to reduce pollution from combined sewer overflows (CSOs) to Rock Creek and the Anacostia and Potomac rivers. As part of the LTCP, DC Water is required to separate single combined sewers into separate sanitary and storm sewers for the drainage basins serving four specific overflow locations.

One of the specific drainage basins for this project is CSO 031, which consists of 1.2 acres of contributing area including the private property at 2600 Pennsylvania Avenue NW, portions of the Pennsylvania Avenue NW roadway, and Meigs Memorial Bridge.

The work will occur on a portion of the National Park Service (NPS) property located between Pennsylvania Avenue NW and L Street NW, behind 2600 Pennsylvania Avenue NW. (See back page for proposed construction location map)

SCOPE OF WORK

Work to be performed by DC Water will include the following:

- Separation of existing 12-inch combined sewers along Pennsylvania Avenue NW into sanitary and storm sewers
- Conversion of existing CSO 031 outfall structure to a storm outfall discharging storm water to Rock Creek only
- Restoration of the project site

SCHEDULE

- Construction start: August 2010
- Construction completion: March 2011
- Normal work hours: 7:00 a.m. – 4:30 p.m., Monday through Friday
- Contractor may work during the night or on weekends to minimize service impacts

IMPORTANT INFORMATION

- The 2600 block of L Street NW and adjacent recreation areas will be a temporary work area for this project. As a result, public access to these areas will be either restricted or limited during construction.
- Public access will also be limited in a small portion of the sidewalk area at the 2600 block of Pennsylvania Avenue NW as this, too, will be used as a temporary work area.

TRAFFIC

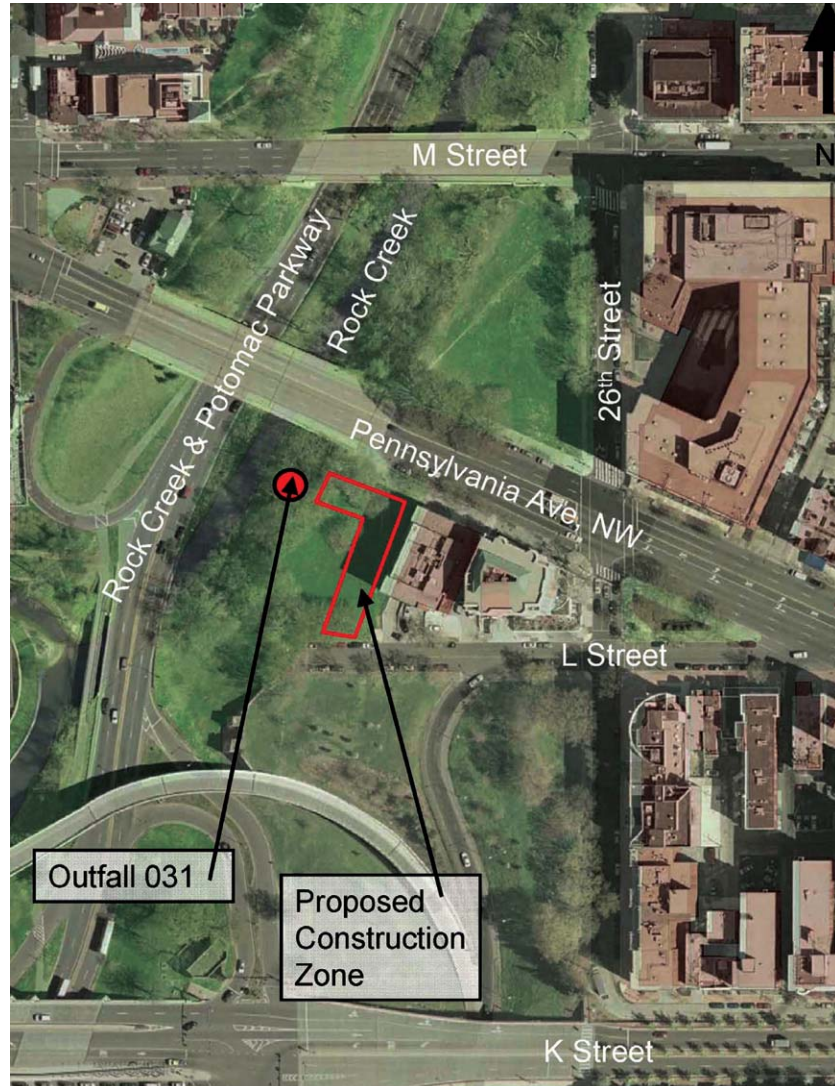
- At various times during construction, "no-parking" signs may need to be placed in certain areas in and around the job site. Notifications regarding "no-parking" zones will be posted 72 hours prior to construction, as required by the District Department of Transportation (DDOT).
- Traffic control, including signage and protective barriers, will be set up to maintain public safety.
- All street parking will be restricted in the construction zone from 7:00 a.m. – 7:00 p.m., Monday through Friday.

PARTNERS

DC Water is currently working closely with the NPS and will coordinate with various Advisory Neighborhood Commissions and civic associations to ensure minimal disruption during this project.

**ROCK CREEK SEWER SEPARATION PROJECT
CSO 031**

PROJECT LOCATION:



FOR MORE INFORMATION, PLEASE CONTACT:

DC Water Project Manager: Al Audette (202) 787-2323

DC Water Project Contractor: Anchor Construction Corporation – Christopher Odom (202) 330-7390 (cellular)

DC Water 24-hr Emergency: (202) 612-3400

DC Water Office of Public Affairs: (202) 787-2200

Email: al.audette@dcwater.com