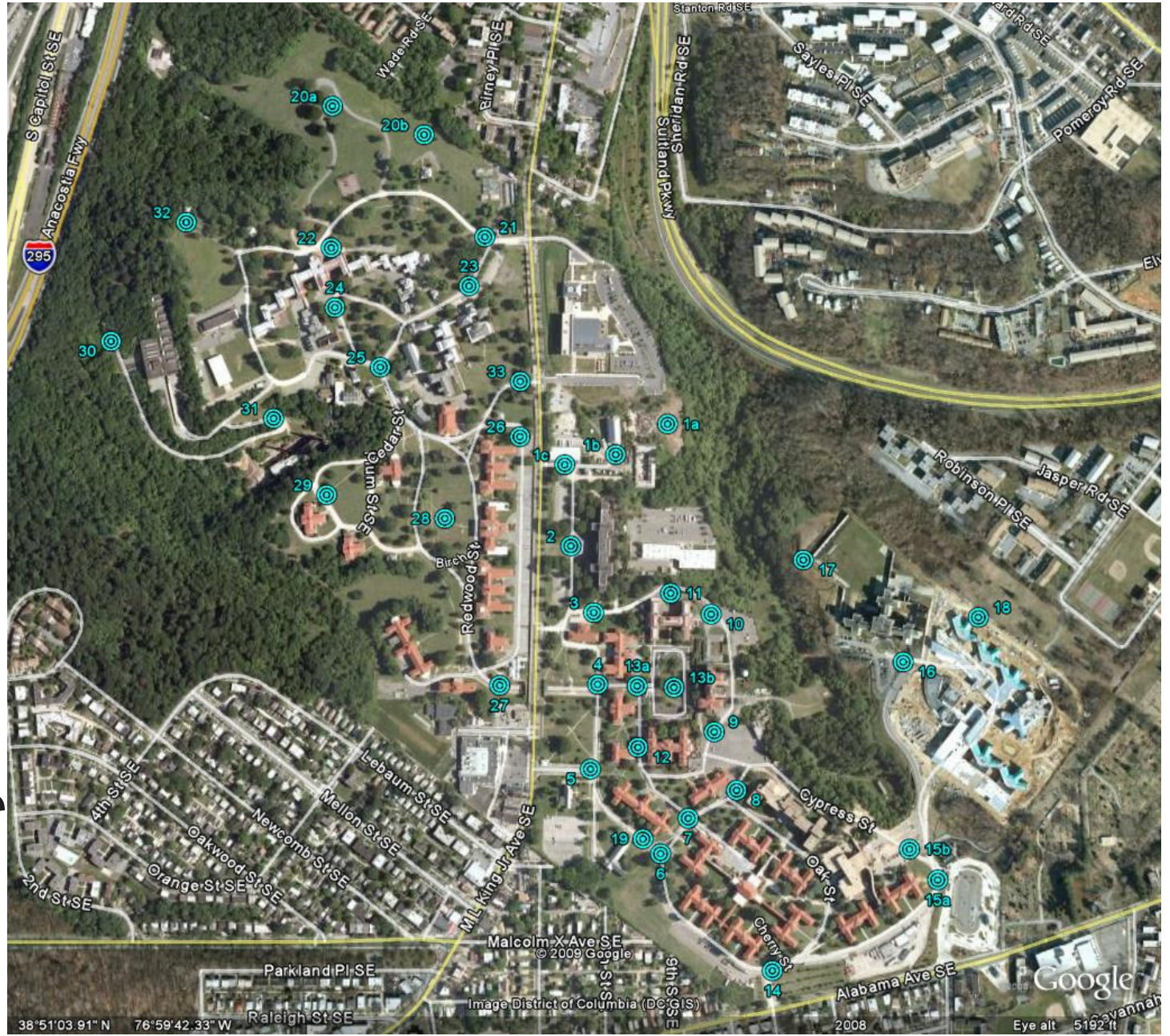


The background image shows the Saint Elizabeths East Campus, a large, multi-story brick building with a prominent central clock tower. The building is partially obscured by lush green trees in the foreground. A yellow balloon is visible in the sky to the right of the clock tower. The overall scene is captured in a slightly hazy or overcast light.

**DC WASA  
PROPOSED ELEVATED  
WATER STORAGE TOWER:  
SAINT ELIZABETHS  
EAST CAMPUS- SITING STUDY**

**EHT Traceries - Balloon Study - August 24, 2009**

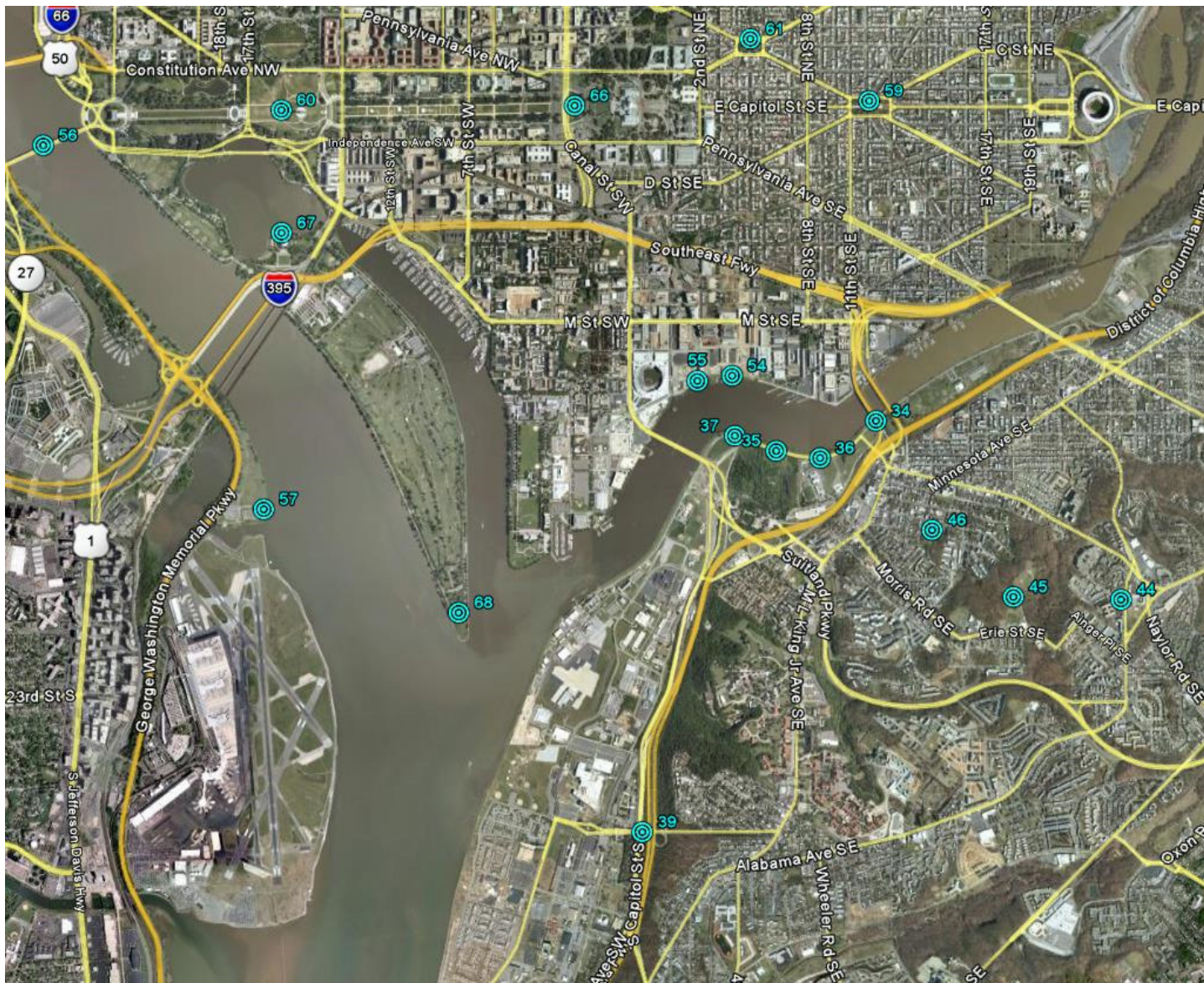
# Primary APE Sites



# Secondary APE Sites - (Neighborhood)



# Secondary APE Sites - (Distant)



SITE #	SITE DESCRIPTION	BUILD ALTERNATIVE LOCATIONS VISIBLE (x)				CLASSIFICATION
		A	B	C	D	
1a	East Campus - View from northern building cluster (Buildings 82 and 83)		x			Primary
1b	East Campus - View from northern building cluster (Building 85)		x		x	Primary
1c	East Campus - View from northern building cluster (Building 86)		x	x	x	Primary
2	East Campus - View along Elm Circle (west of Building 120)			x		Primary
3	East Campus - View from northwest corner of Maple Quadrangle (west of Building 88)			x		Primary
4	East Campus - View from east side of Maple Quadrangle (intersection of Redwood Drive and Sycamore Street)	x				Primary
5	East Campus - View from main gate to East Campus (intersection of Sycamore Street and St. Elizabeths Drive)			x		Primary
6	East Campus - View from northwest corner of Continuous Treatment Quadrangle (intersection of intersection of Sycamore Street and Oak Street)	x				Primary
7	East Campus - View from north side of Continuous Treatment Quadrangle (intersection of intersection of Poplar Street and Oak Street)	x		x		Primary
8	East Campus - View from the northeast corner of Continuous Treatment Quadrangle (intersection of Oak Street and Cherry Street)	x	x			Primary
9	East Campus - View from southeast corner of Maple Quadrangle (parking lot south of existing water tower)	x	x	x		Primary
10	East Campus - View from northeast corner of Maple Quadrangle (parking lot north of existing water tower)	x	x	x		Primary
11	East Campus - View form north side of Maple Quadrangle (parking lot north of building 90)				x	Primary
12	East Campus - View from southeast corner of Maple Quadrangle (Poplar Street, between Buildings 94 and 93)			x	x	Primary
13a	East Campus - View from the east side of Maple Quadrangle (intersection of Polar Street and Redwood Drive)	x	x	x	x	Primary
13b	East Campus - View from center of Maple Quadrangle			x		Primary
14	East Campus - View from southwest corner of Continuous Treatment Quadrangle and south gate to East Campus (Buildings 107 and 108)	x				Primary
15a	East Campus - View from south side of East Campus (south of Building 115)	x	x			Primary
15b	East Campus - View from south side of East Campus (north of Building 115)	x		x		Primary
16	East Campus - View from east side of ravine (west of John Howard Building)	x	x	x		Primary
17	East Campus - View from east side of ravine (north of John Howard Building)	x	x			Primary

SITE #	SITE DESCRIPTION	BUILD ALTERNATIVE LOCATIONS VISIBLE (x)				CLASSIFICATION
		A	B	C	D	
18	East Campus - View from east side of ravine (west of cemetery)	x	x	x	x	Primary
19	East Campus - View from northwest corner of Continuous Treatment Quadrangle (intersection of intersection of Sycamore Street and Oak Street)	x		x		Primary
20a	West Campus - View from the Point					Primary
20b	West Campus - View from the Point		x		x	Primary
21	West Campus - View from Gate 1				x	Primary
22	West Campus - View from north side of Center Building					Primary
23	West Campus - View from north side of Allison Building Cluster (Redwood Drive)			x		Primary
24	West Campus - View from south side of Center Building (Hemlock Street)					Primary
25	West Campus - View from intersection of Redwood Drive and Birch Street				x	Primary
26	West Campus - View from north side of Administration Building (along Martin Luther King, Jr. Ave)			x	x	Primary
27	West Campus - View from Martin Luther King Jr. Avenue Tunnel (Redwood Drive)	x	x	x	x	Primary
28	West Campus - View from Therapeutic Ornamental Landscape (south of Administration Building)			x	x	Primary
29	West Campus - View from Building 60			x		Primary
30	West Campus - View from cemetery					Primary
31	West Campus - View from Services Landscape and Ravine (Ash Street)					Primary
32	West Campus - View from Building 15					Primary
33	West Campus - View from Gate 2				x	Primary
34	Anacostia Park - View from 14th Street Bridge (see Siting Study #28)					Distant
35	Anacostia Park - View from Anacostia Drive SE			x	x	Distant
36	Anacostia Park - View from Anacostia Drive SE (see Siting Study #8)				x	Distant
37	Anacostia Park - View from Frederick Douglass Memorial Bridge (see Siting Study #40)	x	x		x	Distant
38a	Barry Farm - View from Elvans Road, SE between Morris Road and Stanton Road (see Siting Study #19 and #11)	x	x	x		Neighborhood
38b	Barry Farm - View from Elvans Road, SE end of road (no outlet) (see Siting Study #19 and #11)				x	Neighborhood
38c	Barry Farm - View from Elvans Road, SE at the intersection of Elvans Road and Stanton Road (see Siting Study #19 and #11)			x		Neighborhood
39	Bolling Air Force Base - View from main entrance gate at Malcolm X Avenue, SE					Distant
40	Congress Heights - View from 5th Street SE			x		Neighborhood
41	Congress Heights - View from intersection of 2 <sup>nd</sup> & Newcomb streets, SE(see Siting Study #18)					Neighborhood

SITE #	SITE DESCRIPTION	BUILD ALTERNATIVE LOCATIONS VISIBLE (x)				CLASSIFICATION
		A	B	C	D	
42	Congress Heights - View from Martin Luther King Jr. Ave, SE and Raleigh Street, SE			x		Neighborhood
43	Shipley Terrace - View from Robinson Place, SE	x		x		Neighborhood
44	For Circle Park - View from 25th and Wagner streets, SE (see Siting Study #13)					Distant
45	Fort Circle Park - View from Fort Stanton Reservoir (see Siting Study #32)					Distant
46	Historic Anacostia - View from Frederick Douglass National Historic Site (see Siting Study #10)					Distant
47	Suitland Parkway - Intersection with Stanton Road, SE			x		Neighborhood
48	Suitland Parkway - View from 12th Place, SE		x			Neighborhood
49	Suitland Parkway - View from and around pedestrian bridge at intersection with Bowen Road, SE	x	x		x	Neighborhood
50	Suitland Parkway - View from intersection with Alabama Avenue, SE (see Siting Study #12)					Neighborhood
51	Suitland Parkway - View going eastward at intersection with Pomeroy Road, SE			x	x	Neighborhood
52	Suitland Parkway - View going westbound between Stanton Road, SE and Pomeroy Road, SE				x	Neighborhood
53	Shipley Terrace - View from Frederick Douglass Community Center (see Siting Study #33)	x		x		Neighborhood
54	Washington Navy Yard - View from southeast corner of Navy Yard (east of Building 160, overlooking new waterfront park construction)	x	x	x	x	Distant
55	Washington Navy Yard - View from southwest corner of Navy Yard Annex (west of Building 160, see Siting Study #29)	x	x	x	x	Distant
56	Arlington Memorial Bridge - View from center of Memorial Bridge	x	x	x	x	Distant
57	George Washington Memorial Parkway - Gravelly Point (see Siting Study #4)	x	x	x	x	Distant
58	George Washington Memorial Parkway - View from Marina	x	x	x	x	Distant
59	Lincoln Park - View from East Capitol Street (see Siting Study #27)					Distant
60	Monumental Core, View from U.S. Capitol Building reflecting pool (see Siting Study #35)					Distant
61	Stanton Park - View from C Street, NE (see Siting Study #26)					Distant
62	Congress Heights - View from Congress Heights Metro Station	x	x			Neighborhood
63	Congress Heights - View from Savannah Street, SE			x		Neighborhood
64	Congress Heights - View from Washington Hebrew Congregation Cemetery	x				Neighborhood
66	National Mall - View from Washington Monument					Distant
67	Jefferson Memorial - View from Tidal Basin					Distant
68	East Potomac Park - View from southern end of Hains Point	x	x	x	x	Distant

DC WASA -  
Proposed Elevated Water Storage Tower  
East Campus, Saint Elizabeths Hospital, Washington, DC

Balloon Study - August 24, 2009  
EHT Tracerics, Inc.

<b>VIEW ASSESSMENT SUMMARY</b>			
<b>TOTAL LOCATIONS WHERE BALLOONS WERE VISIBLE</b>			
	<b>Within Primary APE</b>	<b>Within Secondary APE (Neighborhood)</b>	<b>Within Secondary APE (Distant)</b>
<b>SITE A</b>	15	6	7
<b>SITE B</b>	13	4	7
<b>SITE C</b>	19	9	7
<b>SITE D</b>	13	4	9