

Northeast Boundary Tunnel Project
Rhode Island Ave. NE Construction Site
Night Work
March 6, 2024

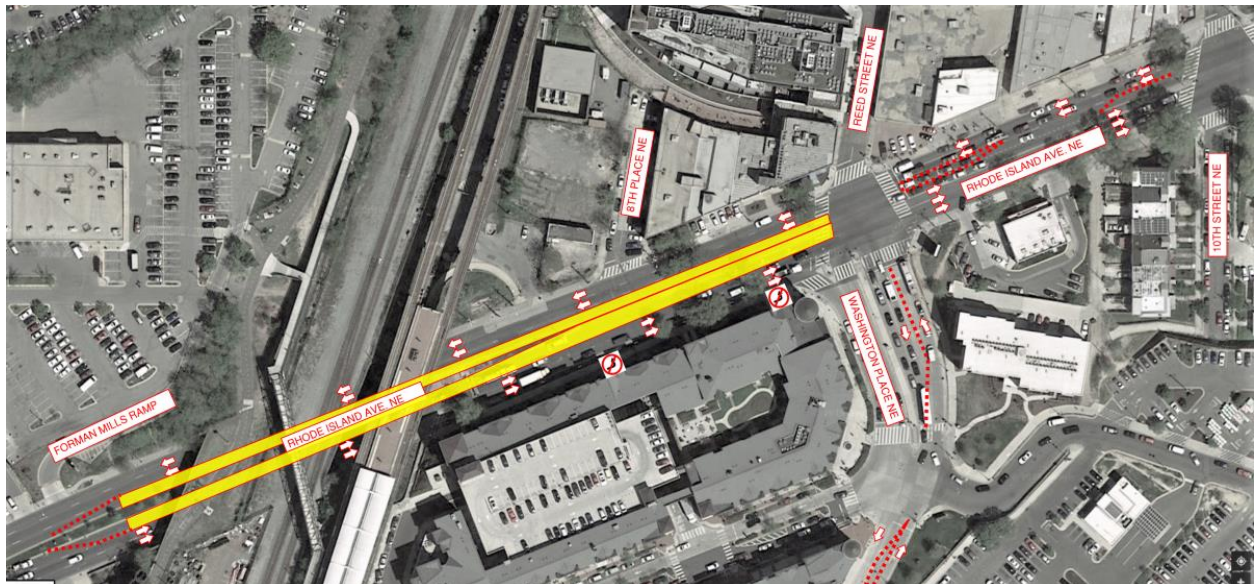
David L. Gadis, Chief Executive Officer

DISTRICT OF COLUMBIA WATER AND SEWER AUTHORITY | 1385 CANAL STREET, SE | WASHINGTON, DC 20003

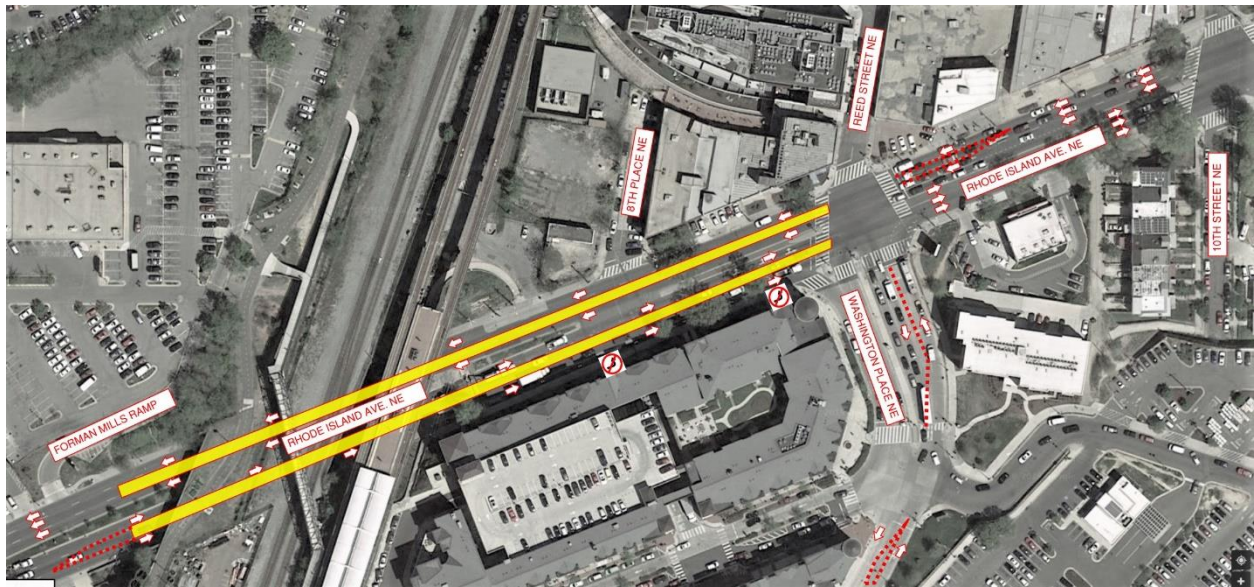
Greetings Neighbors.

On or about March 11, 2024, DC Water’s contractor will begin night work to mill and pave Rhode Island Avenue, NE between 12th Street, NE and 5th Street, NE. The contractor will mill and pave Rhode Island Avenue, NE in each direction beginning at the center median lanes. Two lanes of traffic in each direction will be maintained and shifted around the work zones.

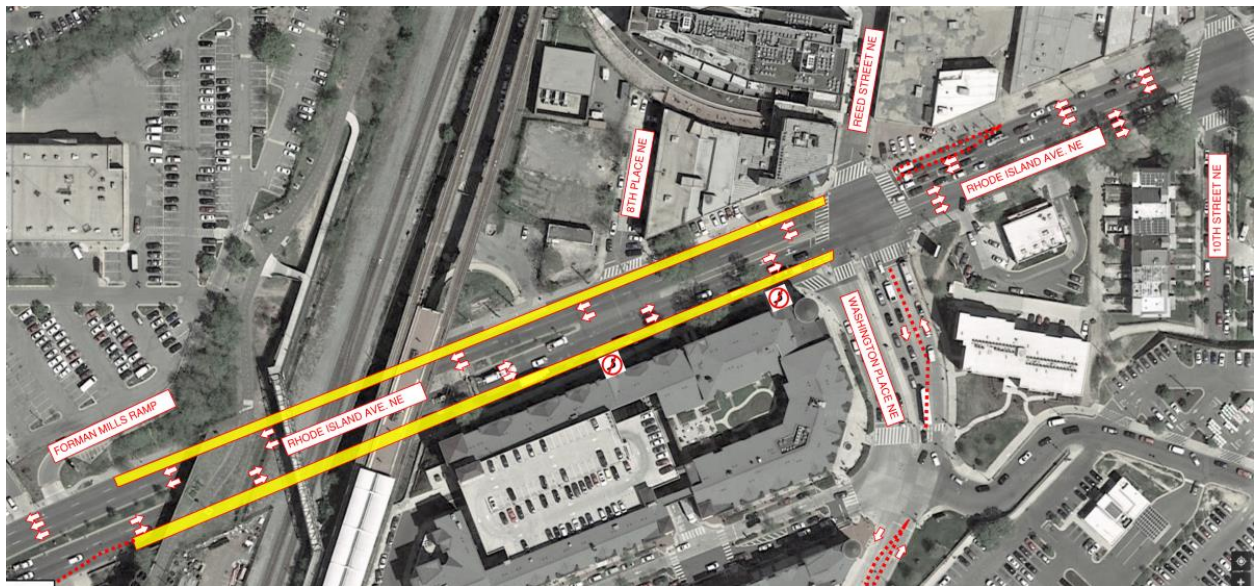
During this traffic phase, night work hours are between 7:00 pm and 7:00 am. This work will be done in three phases and is expected to take 3 days to complete, weather permitting.



Phase 1: In the above map, the white arrows show traffic flow around the construction sites highlighted in yellow.



Phase 2: In the above map, the white arrows show traffic flow around the construction sites highlighted in yellow.



Phase 3: In the above map, the white arrows show traffic flow around the construction sites highlighted in yellow.



In the above image red arrows show the flow of the traffic for the Reed Street detour

Travel and Parking Restrictions

- Travel is reduced to two lanes in each direction of Rhode Island Avenue NE between 12th Street NE and the entrance of the Forman Mills.
- No left turns from Rhode Island Avenue NE onto Reed Street NE or 10th Street NE. Motorists may use 12th Street NE to Franklin Avenue NE as a detour to Reed Street NE.
- Parking restrictions are in place on each side of Rhode Island Avenue between 12th Street NE and extending just beyond the WMATA Rhode Island Avenue -Brentwood Metro Station bridge.

Additional Information

- People who live or work near the affected locations will notice additional construction equipment and personnel as well as noise associated with construction activities.
- Commuters and pedestrians will notice road signs and/or flagging personnel directing them around the worksite.
- Parking restrictions will be in place. **Please do not park in the temporary No Parking areas.** When the work is complete, the signs will be removed.

Project Details

The Northeast Boundary Tunnel (NEBT) is in service. It is the final component of the Anacostia River Tunnel and begins south of RFK Stadium and will extend north to Rhode Island Avenue, NE, and west to 6th Street, NW. With the NEBT operational, combined sewer overflows to the Anacostia River will be reduced by 98 percent, and the chance of flooding in the areas it serves will be reduced to a 7 percent chance in any given year.

Northeast Boundary Tunnel Project
Travel lane shifts on Rhode Island Avenue NE
March 6, 2024

For more information

Email: dccleanrivers@dcwater.com

24/7 NEBT Hotline: **(800) 988-6151**

Northeast Boundary Tunnel Project Website: dcwater.com/NEBT