

# Northeast Boundary Tunnel Project

## First Street Pump Station Construction Site

February 14, 2023

David L. Gadis, Chief Executive Officer

DISTRICT OF COLUMBIA WATER AND SEWER AUTHORITY | 1385 CANAL STREET, SE | WASHINGTON, DC 20003

### Greetings Neighbors.

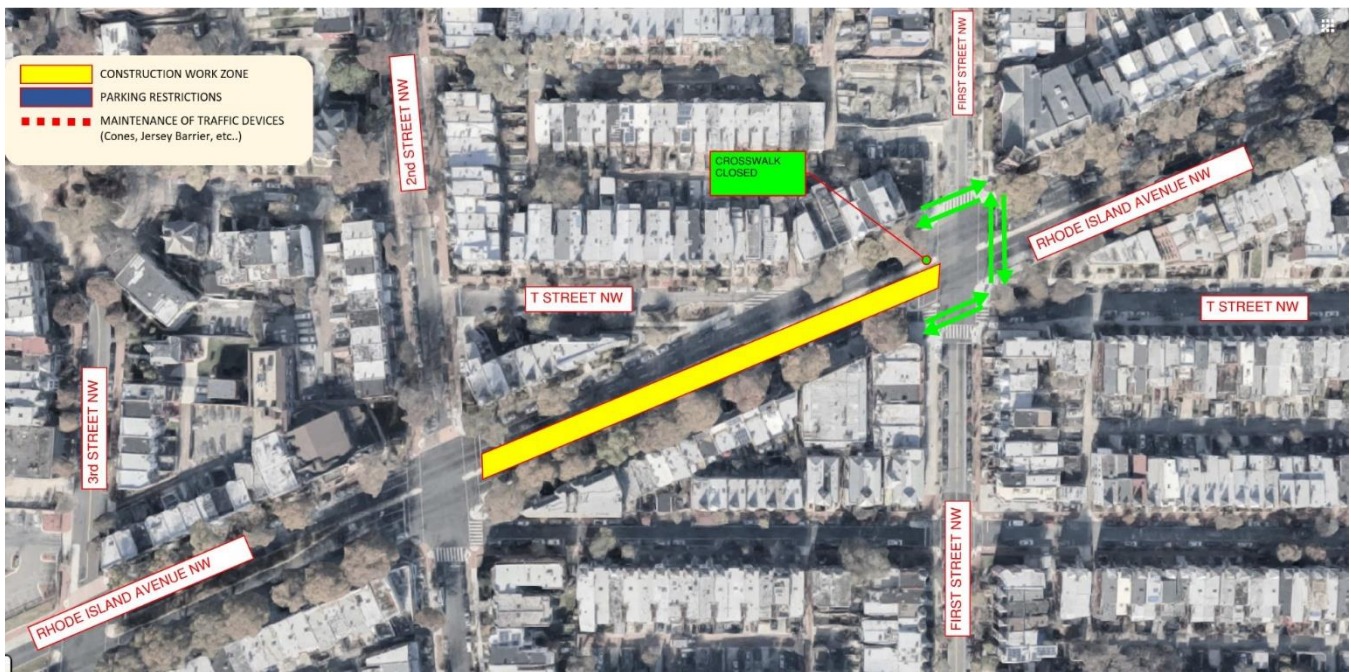
DC Water’s contractor continues restoration activities at the First Street Pump Station construction site with final installation of traffic signalization at the median of First Street, NW and Rhode Island Avenue NW. Construction activities will include excavating a trench and installing an underground electrical duct bank and a new traffic signal pole.

Following this work on or about February 21, 2024, DC Water’s contractor will begin restoration of the medians in Rhode Island Avenue, NW. The median work will be completed in 2 phases. Phase one will restore the median in Rhode Island Avenue, NW from 2<sup>nd</sup> Street to First Street. Phase two will restore the median in Rhode Island Avenue, NW from First Street to North Capitol Street. This work will require a traffic adjustment along Rhode Island Avenue NW.

Work hours will be from 9:30 AM to 3:30 PM, Monday through Friday, and on Saturday from 7:00 AM to 3:00 PM. Each phase is anticipated to last 10-12 days. Residents will be notified as the contractor transitions from phase one to two.



Phase 1 map shows construction sites in yellow, traffic flow indicated by white arrows, and parking restrictions represented by blue lines.



The above map shows construction sites in yellow, green arrows indicate how pedestrians will move around the construction area.

## PHASE 1 Traffic Impacts

### Travel Restrictions

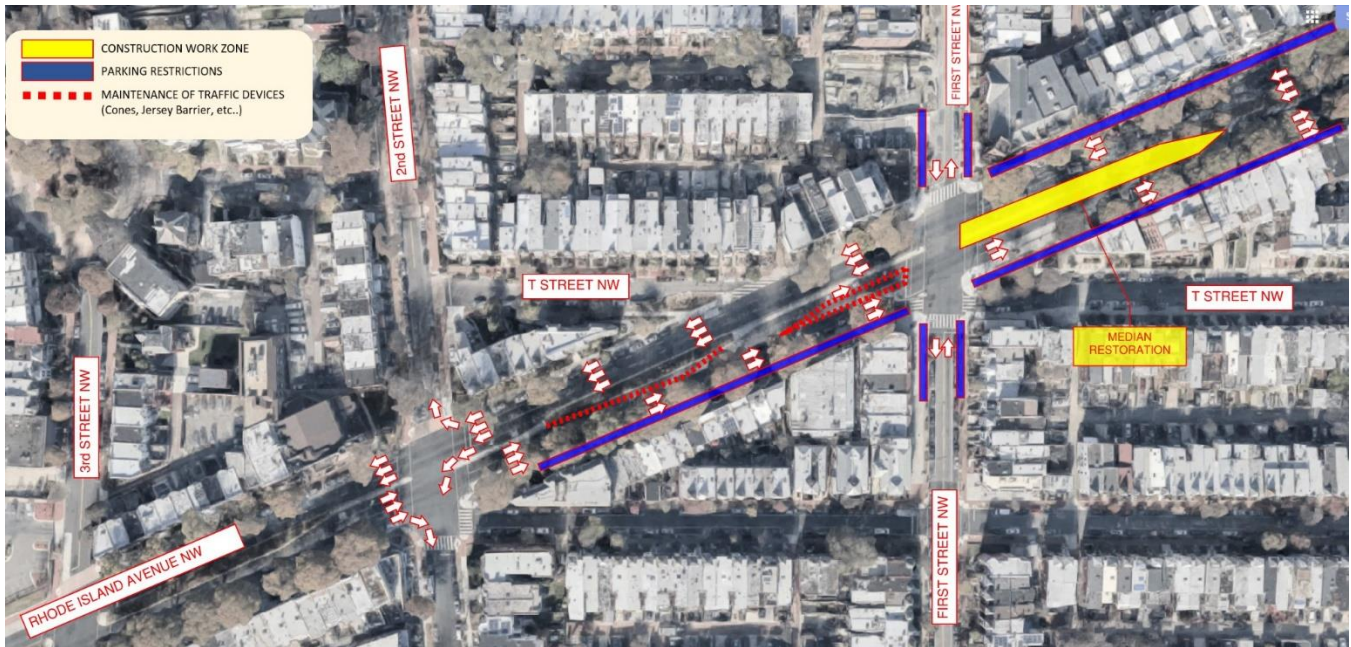
- Westbound and eastbound traffic on Rhode Island Avenue NW will be reduced to two lanes in both directions between First Street and 2<sup>nd</sup> Street NW.
- Left turns are not permitted from eastbound Rhode Island Avenue NW onto northbound First Street.

### Parking Restrictions

- Parking restrictions will be in place on the westbound side of Rhode Island Avenue NW between North Capitol Street and 2<sup>nd</sup> Street.
- Parking restrictions will be in place on the eastbound side of Rhode Island Avenue NW between 2<sup>nd</sup> Street and First Street.

### Pedestrian Detour

- The west crosswalk will be closed during construction. Please follow detour signs to the east crosswalk.



Phase 2 map shows construction sites in yellow, traffic flow indicated by white arrows, and parking restrictions represented by blue lines.



The above map shows construction sites in yellow, green arrows indicate how pedestrians will move around the construction area.

## PHASE 2 Traffic Impacts

### Travel Restrictions

- Westbound traffic on Rhode Island Avenue NW will be reduced to two lanes between First Street and North Capitol Street.

- Eastbound traffic on Rhode Island Avenue NW will be reduced to two lanes between 2<sup>nd</sup> Street to North Capitol Street.

### **Parking Restrictions**

- Parking restrictions will be in place on the westbound side of Rhode Island Avenue NW from First Street to North Capitol Street.
- Parking restrictions will be in place on the eastbound side of Rhode Island Avenue NW from 2<sup>nd</sup> Street to North Capitol Street.

### **Pedestrian Detour**

- The east crosswalk will be closed during construction. Please follow the detour signs to the west crosswalk.

### **Project Details**

The Northeast Boundary Tunnel (NEBT) is in service. It begins south of RFK Stadium and extends north to Rhode Island Avenue NE and west to 6th Street NW. With the commissioning of the NEBT, the Anacostia River Tunnel system is complete and will reduce combined sewer overflows to the Anacostia River by 98 percent in an average year! As the final connection to the system, the NEBT will mitigate flooding in areas chronically affected, including Rhode Island Avenue, Mt. Olivet Road NE, and the Bloomingdale neighborhood.

### **For more information, please contact.**

Email: [dccleanrivers@dcwater.com](mailto:dccleanrivers@dcwater.com)

24/7 NEBT Hotline: (800) 988-6151

DC Clean Rivers Project: [dcwater.com/clean-rivers-project](https://dcwater.com/clean-rivers-project)

Northeast Boundary Tunnel Project Website: [dcwater.com/NEBT](https://dcwater.com/NEBT)