

PINEY BRANCH SEWER REHABILITATION PROJECT ADVISORY NEIGHBORHOOD COMMISSIONS 4B, 4C, 4D & 4E

OVERVIEW

DC Water is performing sewer rehabilitation projects throughout the city as part of its Capital Improvement Program. This project involves rehabilitation of a portion of the Piney Branch Sewer, located in Northwest DC (see project location map on back). Among many benefits, this project will help to prolong the life of the sewer.

SCOPE OF WORK

The construction activities involved in this project include, but are not limited to, the following:

- Structural rehabilitation of approximately 13,800 linear feet of combined sewer within the project area
- Rehabilitation of 70 existing manholes along the sewer alignment, and construction of three new manholes
- Abandonment of approximately 400 linear feet of existing 36-inch to 51-inch diameter pipelines and other supporting sewer infrastructure at Sherman Circle NW, within NPS property
- Point repairs to portions of the sewer, as needed
- Installation of sewer bypass pumping, where needed

SCHEDULE

- Estimated construction start: September 2023
- Construction completion: September 2026
- Normal work hours: 9:30am to 3:30pm, Monday through Friday

The contractor may, at times, need to work on weekends, dependent upon certain construction activities, or due to inclement weather.

IMPORTANT INFORMATION

- DC Water will work to ensure disruptions are minimized during construction operations, and will restore all work sites to their original condition upon completion of the work.
- The design and rehabilitation technology has been carefully determined to incorporate the least amount of impacts to the surface operations and remove the need for excavation.
- Some sewage odor may be intermittently noticed during the construction operations.

TRAFFIC

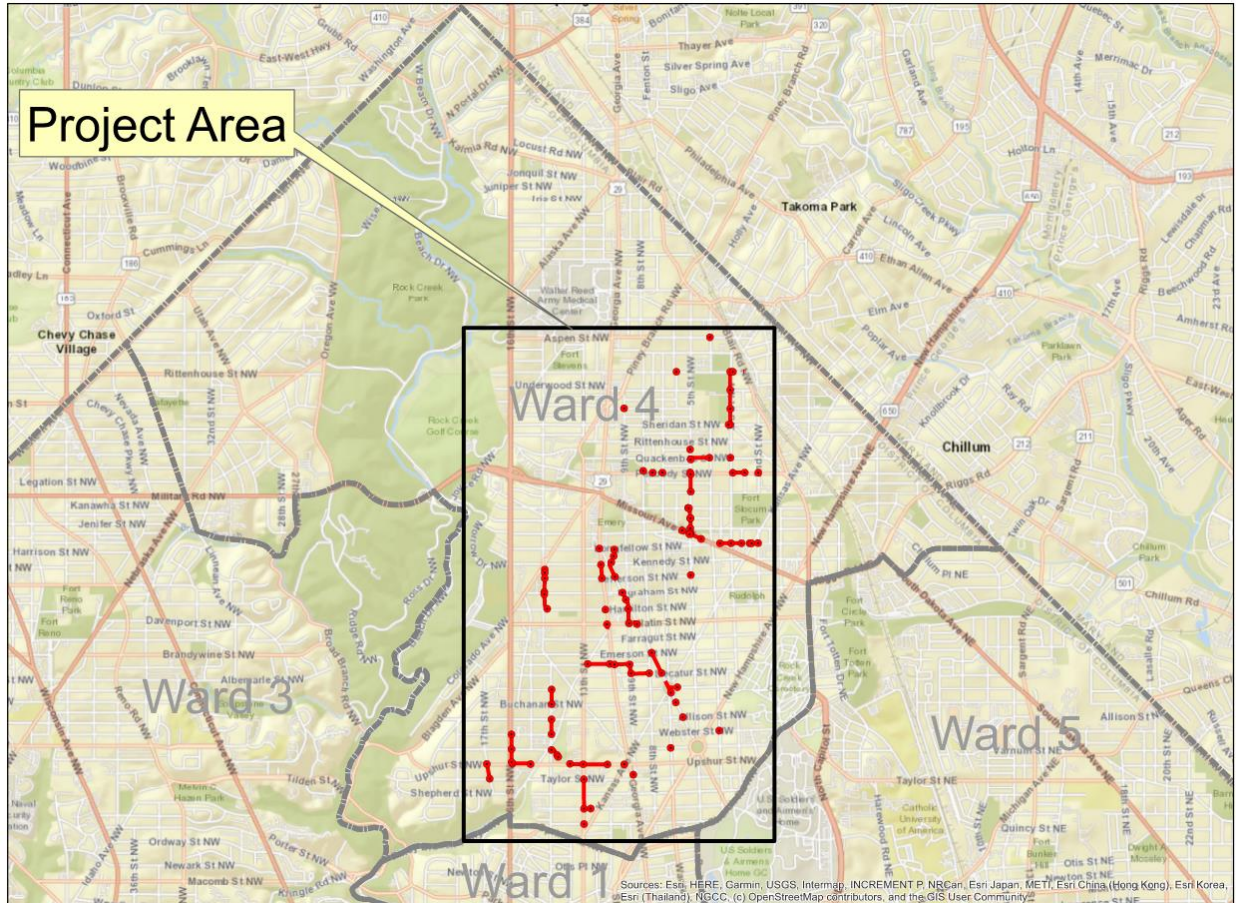
- Traffic control, including signage and protective barriers, will be set up to maintain public safety during construction, in accordance with District Department of Transportation Permit and Standards.
- Temporary lane closures will occur and parking may be impacted by equipment during the rehabilitation activities.

PARTNERS

DC Water will coordinate closely with all critical area stakeholders during this project to minimize disruption to the extent possible, and to provide regular updates. The list of stakeholders includes, but is not limited to, the following: Impacted residents; Mayor's Office of Community Relations and Services; Ward Councilmember(s); local Advisory Neighborhood Commissions; and area businesses.

**PINEY BRANCH SEWER REHABILITATION PROJECT
ADVISORY NEIGHBORHOOD COMMISSIONS 4B, 4C, 4D & 4E**

PINEY BRANCH SEWER REHABILITATION LOCATION MAP



FOR MORE INFORMATION, PLEASE CONTACT:

DC Water Project Manager: Woinshet Tegegne (202) 787-7604 / woinshet.tegegne@dcwater.com

DC Water Project Contractor: Spiniello Co. – Shujaat Ali Khan (443) 653-5191

DC Water Project Community Liaison: Emanuel Briggs (202) 787-2003 / emanuel.briggs@dcwater.com

DC Water 24-hour Emergency/Command Center: (202) 612-3400