

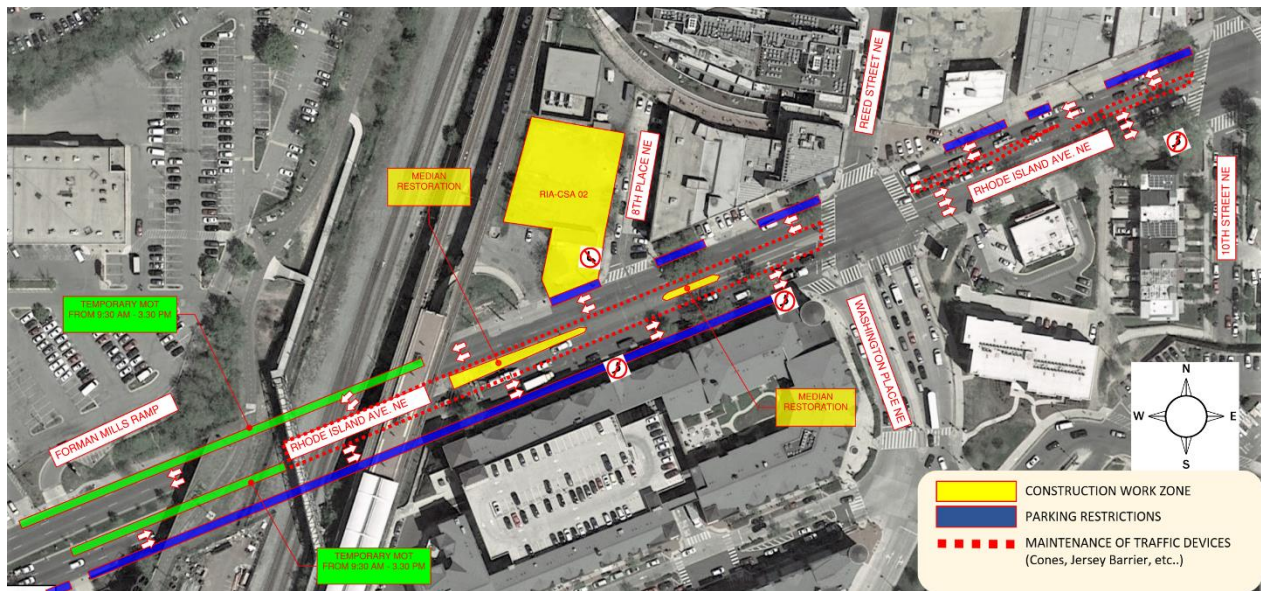
TRAFFIC ADVISORY

DC CLEAN RIVERS PROJECT – NORTHEAST BOUNDARY TUNNEL PROJECT Rhode Island Avenue NE Traffic Pattern Updates

Traffic on Rhode Island Avenue NE will shift around short-duration work zones.

February 20, 2024

(Washington, DC) – On or about February 22, 2024, DC Water’s contractor will decommission fourteen monitoring instruments on Rhode Island Avenue, NE under the WMATA Metro bridge. The contractor will use a drill rig to access the instruments and haul trucks to remove debris from the work zone. The contractor will set up temporary work zones to decommission the instruments between 9:30 am and 3:30 pm and work on one side of Rhode Island Avenue at a time. Traffic will be reduced to two lanes and shift around the work zone. This work is weather-related and expected to take three weeks to complete.



In the above map, the white arrows show traffic flow around the construction sites highlighted in yellow. Blue lines reflect parking restrictions.

In support of deep excavation work for the Northeast Boundary Tunnel, DC Water's contractor installed deep borehole monitors to measure soil displacement and underground water levels. With the construction of the diversion facility complete and the Northeast Boundary Tunnel

now in service, the monitoring devices will be decommissioned according to Department of Energy and Environment standards.

Travel and Parking Restrictions

- When work occurs in the westbound lanes of Rhode Island Avenue, NE the reduction to two lanes will begin at 10th Street, NE, and continue under the WMATA Metro bridge.
- When work occurs in the eastbound lanes of Rhode Island Avenue, NE the lane reduction will begin at 4th Street, NE, and continue to Washington Place, NE.
- Left turn restrictions from Rhode Island Avenue, NE to 8th Place, NE, Reed Street, NE, and 10th Street, NE will remain in place.
- Parking restrictions extend on Rhode Island Avenue, NE between 10th Street, NE, and 4th Street, NE.
- Sidewalks will remain open under the Metro bridge.

Additional Information

- People who live or work near the affected locations will notice additional construction equipment and personnel as well as noise associated with construction activities.
- Commuters and pedestrians will notice road signs and/or flagging personnel directing them around the worksite.
- Parking restrictions will be in place. **Please do not park in the temporary No Parking areas.** When the work is complete, the signs will be removed.

Project Details

The Northeast Boundary Tunnel (NEBT) is in service. It is the final component of the Anacostia River Tunnel and begins south of RFK Stadium and will extend north to Rhode Island Avenue, NE, and west to 6th Street, NW. With the NEBT operational, combined sewer overflows to the Anacostia River will be reduced by 98 percent, and the chance of flooding in the areas it serves will be reduced to a 7 percent chance in any given year.

For more information

Email: dcleanrivers@dcwater.com

24/7 NEBT Hotline: **(800) 988-6151**

Northeast Boundary Tunnel Project Website: dcwater.com/NEBT